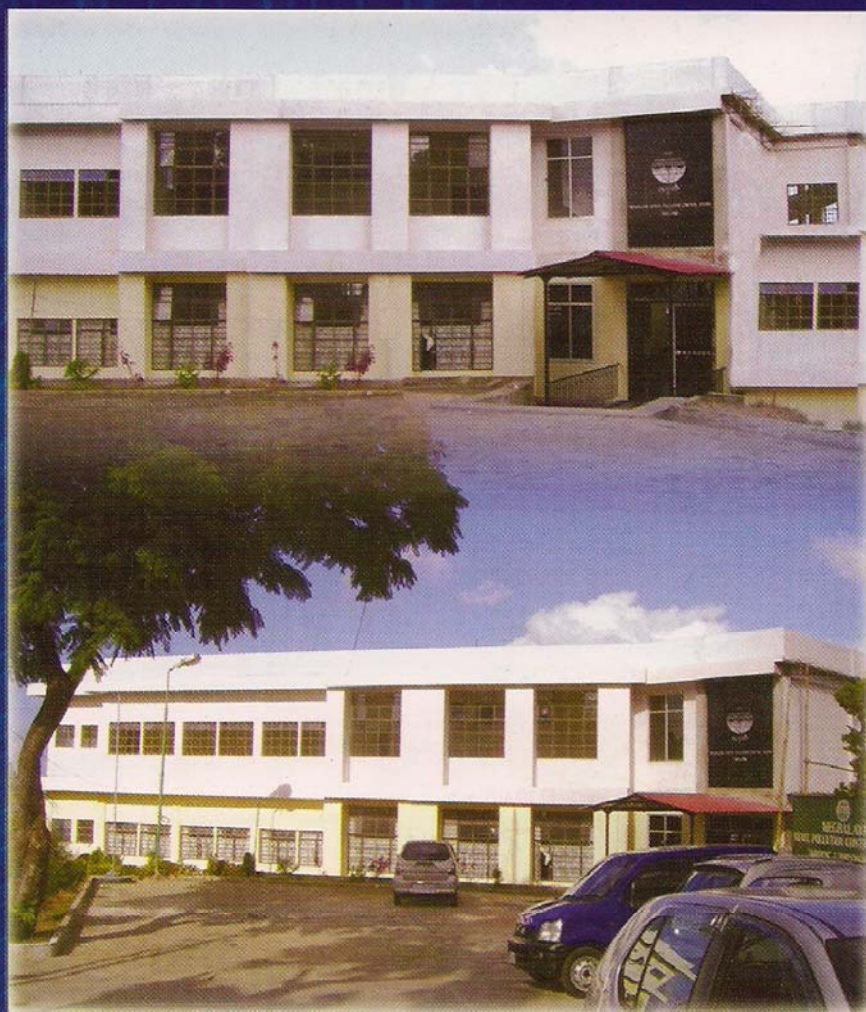


ANNUAL REPORT

2004 - 2005



MEGHALAYA STATE POLLUTION CONTROL BOARD

'ARDEN', LUMPYNGNGAD, SHILLONG - 793014





ANNUAL REPORT

2004 - 2005

MEGHALAYA STATE POLLUTION CONTROL BOARD

‘ARDEN’, LUMPYNGNGAD, SHILLONG – 793014



CONTENTS



1. INTRODUCTION
 2. CONSTITUTION OF THE BOARD AND CHANGES THEREIN
 3. MEETINGS OF THE BOARD WITH MAJOR DECISIONS
 4. COMMITTEES CONSTITUTED BY THE BOARD
AND THEIR ACTIVITIES
 5. MONITORING NETWORK FOR AIR QUALITY
WATER QUALITY AND NOISE LEVEL
 6. ENVIRONMENTAL RESEARCH
 7. ENVIRONMENTAL TRAINING
 8. ENVIRONMENTAL AWARENESS
AND PUBLIC PARTICIPATION
 9. ENVIRONMENTAL STANDARDS INCLUDING THE TIME
SCHEDULE FOR THEIR ENFORCEMENT
 10. PROSECUTIONS AND CONVICTIONS FOR ENVIRONMENTAL
CONTROL
 11. FINANCE AND ACCOUNTS OF THE BOARD
 12. OTHER ACTIVITIES OF THE BOARD
 13. ANNEXURES
-

1 INTRODUCTION

The State Board for Prevention and Control of Water Pollution, Meghalaya was constituted by the Government of Meghalaya on the Sixteenth Day of November, Nineteen Eighty Three in pursuance of the Water (Prevention & Control of Pollution) Act, 1974. The Board was later renamed as Meghalaya State Pollution Control Board in 1988. After the enactment of the Air (Prevention & Control of Pollution) Act, 1981, the enforcing responsibility of the Act was entrusted to the Board. The functions of the Board are as laid down under Section 17 of the Water (Prevention and Control of Pollution) Act, 1974 and Section 17 of the Air (Prevention and Control of Pollution) Act, 1981.

Besides the enforcement of the Water and the Air Act, the Board is also enforcing the following Acts, Rules and Notifications:

- The Water (Prevention and Control of Pollution) Cess Act, 1977, and as amended by Amendment Act in 1991.
- The Water (Prevention and Control of Pollution) Cess Rules, 1978.
- The Hazardous Waste (Management and Handling) Rules, 1989.
- The Manufacture, Storage and Import of Hazardous Chemicals Rules, 1989.
- The Manufacture, Use, Import, Export & Storage of Hazardous Micro organism or Cells Rules, 1989.
- The Public Liability Insurance Act, 1991.
- The Environmental Impact Assessment Notification, 1994.
- The Chemical Accidents (Emergency Planning, Preparedness & Response) Rules, 1996.
- The Bio-Medical Wastes (Management & Handling) Rules, 1998
- The Recycled Plastics Manufacture and Usage Rules, 1999.
- The Fly Ash Notification, 1999.
- The Noise Pollution (Regulation and Control) Rules, 2000.
- The Ozone Depleting substances (Regulation) Rules, 2000.
- The Municipal Solid Wastes (Management & Handling) Rules, 2000.
- The Batteries (Management & Handling) Rules 2001.

The Board has been functioning with 50 (Fifty) Staff as on 31-03-2005 against a sanctioned strength of 97 (Ninety Seven). The details of staff position are given at **Annexure-III**. The organizational chart of the Board is given at **Annexure-II**.

The Central Office of the Board is located at Shillong. At present, the Board does not have any Regional or District Offices. The Central Office is responsible for framing general policies relating to enforcement of the Acts and Rules. It also looks after the general administration and coordination with other agencies. Besides, it takes up public awareness programmes on matters relating to environment protection and pollution control. The Central Laboratory is well-equipped and carries out analysis of samples of water, waste water, stack emission, ambient air, bacteriological tests etc.

The other activities of the Central Office of the Board are:

- Inspection of industries and local bodies.
- Monitoring the quality of water and wastewater.
- Monitoring the quality of ambient air and stack emissions.
- Inspection of sites proposed for setting up of industries to verify the suitability of the same from environmental point of view.
- Water bodies monitoring under National Water Quality Monitoring (NWQM) Programme.
- Ambient air quality monitoring under National Air Monitoring Programme (NAMP).
- Offering guidance to industries and local bodies on statutory provisions.
- Issue of "Consents to Establish" and "Consents to Operate" in respects of industries, mining projects specified developmental projects and municipal bodies.
- Waste Management under E.P. Act:
 - ✓ Hazardous Waste Management
 - ✓ Identification of Sources
 - ✓ Characterization & Quantification of Wastes
 - ✓ Enforcement of provisions of the Rules
 - ✓ Monitoring of compliance to standards
- Bio-Medical Waste Management:
 - ✓ Identification of Sources
 - ✓ Characterization & Quantification of Wastes
 - ✓ Enforcement of Provisions of the Rules
 - ✓ Monitoring of Compliance to Standards
- Municipal Solid Waste Management Act:
 - ✓ Identification of Sources
 - ✓ Characterization & Quantification of Wastes
 - ✓ Enforcement of provisions of the Rules
 - ✓ Monitoring of Compliance to Standards
- Batteries Management:
 - ✓ Identification of Sources
 - ✓ Characterization & Quantification of Wastes
 - ✓ Enforcement of Provisions of the Rules
 - ✓ Monitoring of Compliance to Standards
- Plastic Management:
 - ✓ Identification of Sources
 - ✓ Characterization & Quantification of Wastes
 - ✓ Enforcement of Provisions of the Rules
 - ✓ Monitoring of Compliance to Standards

- Noise Pollution Management:
 - ✓ Identification of Sources in respect of industries
 - ✓ Enforcement of Provisions of the Rules in respect of industries
 - ✓ Monitoring the Compliance of Standards by industries
 - ✓ Monitoring of ambient noise in Industrial/Commercial/Residential areas

2 CONSTITUTION OF THE BOARD AND CHANGES THEREIN

The State Government nominates the Members of Meghalaya State Pollution Control Board. The Board was constituted under Section 4 of the Water (Prevention & Control of Pollution) Act, 1974 vide Notification No. PHE.161/83/1 Dtd. the 16th November, 1983. The last reconstitution was notified out in May 1998 vide Notification No. PHE.161/83/178 Dtd. the 21st May 1998. However, the three Non-officials Members were renotified vide Notification NO.PHE.161/83/187 Dtd. the 24th March, 1999 & NO.PHE.161/83/205 Dtd. the 5th January, 2001.

The Board consists of 17(seventeen) Members nominated by the State Government as per provisions laid down in Sub-Section (2) of Section 4 of the Water (Prevention and Control of Pollution) Act 1974. Besides the Chairman and the Member Secretary, there are 5(five) official Members representing various State Government Departments, 5(five) Members representing Local Authorities, 2(two) Members representing the Co-operatives and Corporations owned, managed or controlled by the State Government and 3(three) Non-official Members. The list of the Members of the Board is appended at **Annexure-I**

During the financial year 2004-2005, Shri H. Datta Roy was the Chairman and Shri A.Biswa was the Member Secretary of the Board.

3 MEETINGS OF THE BOARD WITH MAJOR DECISIONS

During the year 2004-2005, the Board conducted the following Meetings:

SL NO.	MEETING NO.	DATE	VENUE	NO. OF MEMBERS ATTENDING THE MEETING
1.	42 nd Board Meeting	19-11-2004	Office Chamber of the Chairman, MSPCB	7 (Seven)
2.	43 th Board Meeting	25-02-2005	Office Chamber of the Chairman, MSPCB	6 (Six)

The following decisions were taken in the above Meetings:

42nd BOARD MEETING

- ✓ The Analysis of data under the Scheme "Bio-Mapping of Rivers & Streams of Meghalaya" should be completed and the Report be sent to CPCB.
- ✓ Appropriate action should be taken as per the provisions of the Bio-Medical Waste Rules, 1998 to those Hospitals / PHCs / CHCs/ Dispensaries, etc. which have failed to apply for Authorization.
- ✓ Recruitment to the 10(ten) posts sanctioned by the MoEF should be completed by December 2004.
- ✓ The matter of non-payment of water Cess should be taken up with the PHE Deptt. which is the Administrative Deptt. of the Board.

43rd BOARD MEETING

- ✓ The Board endorsed the action taken in advertising of the posts of Asstt. Environmental Engineer, Junior Law Officer, Junior Scientific Assistant, Data Entry Operator and Field Assistant.
- ✓ The Board ratified the Minutes of the Promotion Committee held on 08-02-2005.
- ✓ The Board endorsed the action taken in serving Directions under Section 5 to the DHS (MI) for payment of Authorization fees under the Bio-Medical Waste Rules, 1998.
- ✓ The Board ratified the action taken in serving Closure Notice to industries for operating without the Consent to Operate / non-compliance to the terms and conditions stipulated in the Consent Order.
- ✓ The Board approved the proposal for constitution of the Selection Committee for recruitment of staff under the Project "Spatial Environment Planning."

4

COMMITTEES CONSTITUTED BY THE BOARD AND THEIR ACTIVITIES

The "Consent Committee" and the "Purchase Committee" of the Board are the ones which were last reconstituted on the 20th November, 1998 and the 16th November, 2000 respectively. The Selection Committees for recruitment to various posts under the Board through direct recruitment or promotion were constituted during July 2003.

The Compositions of the Consent Committee, the Purchase Committee, the Selection Committee and the Promotion Committee are as given below:

MEMBERS OF THE CONSENT COMMITTEE FOR THE PERIOD 2004-2005

- | | |
|---|------------|
| 1. Chairman
Meghalaya State Pollution Control Board,
Shillong. | : Chairman |
| 2. Senior Inspector of Boilers & Factories,
Inspectorate of Boilers & Factories,
Meghalaya, Shillong. | : Member |

3. Conservator of Forests,
Meghalaya, Shillong. : Member
4. Deputy Director,
Directorate of Industries,
Meghalaya, Shillong. : Member
5. Director of Mineral Resources,
Meghalaya, Shillong. : Member
6. Member Secretary,
Meghalaya State Pollution Control Board,
Shillong. :Member
Convener

MEMBERS OF THE PURCHASE COMMITTEE DURING THE YEAR 2004-2005

1. Chairman
Meghalaya State Pollution Control Board,
Shillong. : Chairman
 2. Director of Industries *or* his nominee. : Member
 3. Chief Engineer P.H.E Deptt. Meghalaya *or* his
nominee : Member
 4. The Director,
Regional Sophisticated Instrument Centre,
Bijni Complex, N.E.H.U, Shillong. : Member
 5. Senior Scientist, Indian Council of Agricultural
Research(I.C.A.R), Umiam : Member
 6. Member Secretary,
Meghalaya State Pollution Control Board, : Convener
Shillong.
-

MEMBERS OF THE SELECTION COMMITTEE FOR THE PERIOD 2004-2005 [FOR GRADE – 'A' POSTS]

1. Commissioner & Secretary,
Govt. of Meghalaya, P.H.E.Deptt., Shillong : Chairman

-
2. Chairman
Meghalaya State Pollution Control Board, : Member
Shillong
 3. Under Secretary,
Govt. of Meghalaya, P.H.E. Deptt. Shillong. : Member
 4. Environmental Engineer,
I/C North Eastern Zonal Office,
Central Pollution Control Board, Shillong. : Member
 5. Member Secretary,
Meghalaya State Pollution Control Board, :Member
Shillong. Convener
-

**MEMBERS OF THE SELECTION COMMITTEE FOR THE PERIOD 2004-2005
[FOR GRADE – 'B', 'C' & 'D' POSTS]**

1. Chairman
Meghalaya State Pollution Control Board, : Chairman
Shillong.
 2. Chief Administrative Officer,
O/o the C.E., P.H.E. Deptt. Shillong. : Member
 3. Environmental Engineer,
I/C North Eastern Zonal Office,
Central Pollution Control Board, Shillong. : Member
 4. Member Secretary,
Meghalaya State Pollution Control Board, : Member
Shillong.
 5. Administrative Officer/E.O. Meghalaya State
Pollution Control Board, Shillong. :Member
Convener
-

**MEMBERS OF THE ASSESSMENT-CUM- PROMOTION COMMITTEE FOR THE PERIOD 2004-
2005
[FOR GRADE – 'A' POSTS]**

1. Chairman : Chairman
Meghalaya State Pollution Control Board,
Shillong.

-
- | | |
|--|---------------------|
| 2. Member Secretary,
Meghalaya State Pollution Control Board,
Shillong. | : Member |
| 3. Senior Scientist/Scientist 'C' | : Member |
| 4. Sr. Environmental Engineer/ Environmental
Engineer | : Member |
| 5. Chief Administrative Officer,
O/o the C.E., P.H.E. Deptt., Meghalaya,
Shillong | : Member |
| 6. Administrative Officer/Establishment Officer
Meghalaya State Pollution Control Board,
Shillong. | :Member
Convener |
-

MEMBERS OF THE ASSESSMENT-CUM- PROMOTION COMMITTEE FOR THE PERIOD 2004-2005
[FOR GRADE – 'B', 'C' & 'D' POSTS]

- | | |
|---|---------------------|
| 1. Member Secretary,
Meghalaya State Pollution Control Board,
Shillong | : Chairman |
| 2. Chief Administrative Officer,
O/o the C.E., P.H.E. Deptt., Meghalaya,
Shillong | : Member |
| 3. Senior Scientist/Scientist 'C' | : Member |
| 4. Sr. Environmental Engineer/ Environmental
Engineer | : Member |
| 5. Administrative Officer/Establishment Officer
Meghalaya State Pollution Control Board,
Shillong | :Member
Convener |
-

There are 2(two) National Air Quality Monitoring Programme (NAMP) stations in the state and both are located in Shillong City. One station is located in the Office premises of the Board at Lumpyngngad, Shillong (Table 1.0) and the other station is located at the State Tuberculosis office building at Khyndailad, Police Bazar, Shillong (Table 2.0).

Suspended Particulate Matter (SPM), Sulfur Dioxide (SO₂), Oxides of Nitrogen (NO_x) and meteorological parameters viz. wind speed, wind direction, ambient air temperature, humidity, etc. were monitored at these NAMP stations and the observations are as given below:-

TABLE: 1.0 STATION AT BOARD'S OFFICE PREMISES, LUMPYNGNGAD, SHILLONG

MONTH & YEAR 2004	PARAMETERS TESTED (MONTHLY AVERAGES)			
	SPM ($\mu\text{g}/\text{m}^3$)	RSPM ($\mu\text{g}/\text{m}^3$)	SO ₂ ($\mu\text{g}/\text{m}^3$)	NO _x ($\mu\text{g}/\text{m}^3$)
JANUARY	69.8	59.7	1.5	1.6
FEBRUARY	57.7	47.7	0.5	0.8
MARCH	53.0	48.3	1.7	2.0
APRIL	45.6	42.1	BDL	BDL
MAY	43.6	39.8	BDL	BDL
JUNE	41.4	39.8	BDL	BDL
JULY	39.9	37.3	BDL	BDL
AUGUST	37.1	34.7	BDL	BDL
SEPTEMBER	36.6	34.5	BDL	BDL
OCTOBER	40.3	37.7	BDL	BDL
NOVEMBER	38.3	34.9	BDL	BDL
DECEMBER	62.0	57.9	BDL	BDL

* BDL: Below Detectable Limits

TABLE 2.0 STATION AT STATE TUBERCULOSIS BUILDING, POLICE BAZAR, SHILLONG

MONTH & YEAR 2004	PARAMETERS TESTED (MONTHLY AVERAGES)			
	SPM ($\mu\text{g}/\text{m}^3$)	RSPM ($\mu\text{g}/\text{m}^3$)	SO ₂ ($\mu\text{g}/\text{m}^3$)	NO _x ($\mu\text{g}/\text{m}^3$)
JANUARY	158.1	122.5	4.8	22.4

FEBRUARY	57.58	47.4	3.21	28.8
MARCH	130.5	94.9	5.2	19.8
APRIL	78.6	62.4	3.7	14.6
MAY	100.1	66.2	3.5	18.1
JUNE	73.2	57.1	3.3	18.3
JULY	66.3	52.3	1.1	19.1
AUGUST	71.7	55.0	6.6	14.7
SEPTEMBER	74.1	57.8	3.1	16.5

(B) AIR QUALITY MONITORING FOR SOME INDUSTRIES

The Board carried out ambient air (Table 1.0) and source emission (Table 2.0) quality monitoring for some industrial units operating in the state. The following results were obtained during the monitoring: -

TABLE 1.0 AMBIENT AIR QUALITY DATA OF SOME INDUSTRIAL UNITS

DATE	NAME OF THE INDUSTRY & LOCATION	PARAMETERS TESTED				Remarks
		RSPM ($\mu\text{g}/\text{m}^3$)	SPM ($\mu\text{g}/\text{m}^3$)	SO ₂ ($\mu\text{g}/\text{m}^3$)	NO _x ($\mu\text{g}/\text{m}^3$)	
06.01.2004	R.K.B. Cement Pvt. Ltd, Umiam	482.9	807.2	27.9	32.5	Levels of RSPM & SPM are above permissible limits
06.01.2004	R.K.B. Cement Pvt. Ltd, Umiam	269.2	748.7	BDL	75.0	Above permissible limits
06.01.2004	MEDC Complex, Umiam	52.6	147.2	BDL	12.8	Within permissible limits
06.01.2004	MeSEB, (Store), Umiam	53.2	91.9	BDL	10.4	Within permissible limits
22.01.2004	Dorbar Hall, Mawsmmai, Cherrapunjee	125.4	138.2	19.9	12.2	Levels of RSPM are above permissible limits
22.01.2004	Kiln site, Mawsmmai, Cherrapunjee	164.3	203.5	25.0	53.1	Above permissible limits

						e limits
22.01.2004	M/S Komorrah Limestone, Mining Limited, Bholaganj	145.4	343.0	BDL	12.7	Within permissible limits
22.01.2004	M/S Komorrah Limestone, Mining Limited, Bholaganj	29.4	62.1	BDL	BDL	Within permissible limits
22.01.2004	M/S Komorrah Limestone, Mining Corporation, Bholaganj	21.5	47.8	BDL	BDL	Within permissible limits
01.07.2004	MEDC Complex, Umiam	15.5	20.2	BDL	10.3	Within permissible limits
01.07.2004	R.K.B. Cement Pvt. Ltd, Umiam	112.4	144.4	BDL	18.6	Within permissible limits
01.07.2004	R.K.B. Cement Pvt. Ltd, Umiam	20.0	88.6	BDL	11.7	Within permissible limits
01.07.2004	MeSEB Store, Umiam	31.0	41.5	BDL	--	Within permissible limits

TABLE 2.0 STACK MONITORING DATA OF SOME INDUSTRIAL UNITS

DATE	NAME OF THE INDUSTRY & LOCATION	Parameter Tested	Observed value (mg/Nm ³)	Remarks
06.01.2004	M/S RKB Cements, Umiam	PM	1380	Above permissible limits
29.01.2004	NEIGRIHMS, Lawmali, Shillong	SPM HCL VOC	77.085 BDL 0.008%	Within permissible limits
28.01.2004	M/S H.M Cements Ltd, Upper Balijan, Umtru Road, Byrnihat	PM	27.1	Within permissible limits
01.07.2004	M/S Premier Slow Mill, Umiam Industrial Area	PM	276.19	--
17.08.2004	M/S Ganpati Rolling Mills, Pvt. Ltd, Harlibazar	PM	111.1	Within permissible limits
17.08.2004	M/S Meghalaya Coals & Alloys, Byrnihat	PM	133.3	Within permissible limits
17.08.2004	M/S Pawan Ispat Pvt. Ltd., Harlibazar, Byrnihat	PM	88.0	Within permissible limits
17.08.2004	M/S Bimla Ispat & Alloys Pvt. Ltd., Tamulkuchi	PM	129.0	Within permissible limits
08.09.2004	M/S Satya Megha Ispat (P) Ltd. 13 th Mile, Byrnihat, M/S Ignots	PM	33.0	Within permissible limits
08.09.2004	M/S Satya Megha Ispat (P) Ltd. (Ferro Silicon) 13 th Mile,	PM	147.1	Within permissible limits

	Byrnihat,			
08.09.2004	M/S Trishul Hi – Tech, Industries EPIP, Byrnihat, (M/S Ignite & Steel Re-rolling mills)	PM	250	Above permissible limits
29.09.2004	M/S RKB Cements, Umiam Industries Estate	PM	150	Permissible limits
15.10.2004	M/S Trishul Hi-Tech Industry, EPIP, Byrnihat (M/S Ignite)	PM	142.0	Permissible limits
15.10.2004	M/S Trishul Hi-Tech, Industries, EPIP Byrnihat (Re-rolling mills)	PM	500.0	Above permissible limits
03.11.2004	M/S Gita Ferro Alloys (P) Ltd. EPIP, Byrnihat	PM	138.9	Within permissible limits
07.12.2004	M/S Jaintia Ferro Alloys (P) Ltd., Tamulkuchi, Byrnihat	PM	150.0	Within permissible limits
07.12.2004	M/S Gita Ferro Alloys (P) Ltd, EPIP, Byrnihat	PM	125.0	Within permissible limits
07.12.2004	M/S Trishul Hi-Tech Industries EPIP (steel rolling mill), Byrnihat	PM	143.0	Within permissible limits
07.12.2004	M/S Satya Megha Ispat (P) Ltd.	PM	500	Above permissible limits

(c) ASSESSMENT OF VEHICULAR POLLUTION

The main sources of air pollution in the state are the vehicular exhaust emissions simply because the per capita vehicular density in the urban areas is very high. The Board has an Auto-emission-testing centre in its office premises at Lumpyngngad, Shillong which has been functioning since January 1994. This Centre caters to the exhaust testing needs for the commercial petrol - driven light vehicles only.

As per arrangement with the Office of the Commissioner of Transport, Meghalaya, the periodical renewals of permits of taxis are subject to submission of "Green Certificates" issued from the Office of the Board. During the year 2004-2005 the number of vehicles tested at the Centre is as follows:-

PERIOD	TYPE OF VEHICLES	TOTAL NO. OF VEHICLES TESTED	PERCENTAGE OF VEHICLES COMPLYING TO EMISSION STANDARDS	PERCENTAGE NOT COMPLYING TO EMISSION STANDARDS
01.04.2004 to 31.03.2005	Petrol-Driven LMV	1820	76.5%	23.5%

5.2 MONITORING OF WATER QUALITY

(1) MONITORING OF WATER QUALITY UNDER NATIONAL WATER QUALITY MONITORING PROGRAMME (NWMP)

One of the main functions of the Board is to monitor the water quality of water bodies so that a comprehensive programme for prevention and control on abatement of water pollution can be planned. Keeping this in view the Meghalaya State Pollution Control Board is monitoring the water quality of the following 8(eight) surface water bodies and 5(five) ground water bodies in the state, under the National Water Monitoring Programme (NWMP), sponsored by CPCB. The monitoring is done on quarterly basis in surface water and half yearly in case of ground water.

The detail regarding the monitoring stations is stated below:

Table -1.0: Monitoring Stations under National Water Quality Monitoring Programme (NWMP)

Sl. No.	Name of monitoring stations	Location	Parameters analysed on regular basis	Parameters analysed (Once in a Year)
<i>Surface Water</i>				
	Umtrew river	Byrnihat	i. <u>Field Observation:</u>	
	Kyrhukhla river	Khliehriat	i. Weather, Colour & Intensity, Odor, Visible effluent discharge, human.	Turbidity, Alkalinity, Total Hardness, NH ₃ -N, Kjeldahl-N, Calcium, Magnesium, Potassium, Sodium, Sulphates, Phosphates, COD, As*, Zn*, Cu*, Cr*, Cd*, Pb*, Fe*, Ni*, Flouride* and
	Umiyam lake	Umiyam		
	Ward's lake	Shillong		
	Thadlaskein lake	Thadlaskein		
	Myntdu river	Jowai		
	Ganol river	Tura	ii. <u>Physico-chemical & bacteriological parameters:</u> Dissolved Oxygen ,pH, Conductivity, Biological Oxygen Demand, Nitrate Nitrogen, Nitrite Nitrogen, Total Coliform and Fecal Coliform	
	Simsang river	Williamnagar		
			iii. <u>Biomonitoring:</u> Saprobity Index, Diversity Index	
<i>Ground Water</i>				
	Police Bazar spring	Shillong		
	Mawpdang spring	Shillong		
	Wah U Dkhar	Sohra		

	Umsahep spring	Shangpung		
13	Narbong well	Byrnihat		

5.2.1: Water Quality of the monitored water bodies

5.2.1.1: Physico-chemical & bacteriological parameters of Surface Water Quality

- I. **Umiam Lake:** The major sources of pollution of this water body are the discharge of municipal solid and liquid water, dumping of spoils and garbages, deforestation in the catchment area, agricultural activities. Other human activities which interfere with the aquatic irrigation are boating; wasting; fishing, bathing, recreational activities, and being a tourist spot it attract a large number of tourists which also contribute substantially towards pollution.

The monitoring result obtained during the year 2004, indicate that the Dissolved Oxygen value is meeting the desired class. The Biochemical Oxygen Demand value is above the desired class value which is 3mg/L ranges from 8.5mg/L to 10.5mg/L.

The organic pollution examined in terms of Biochemical Oxygen Demand & Coliform count indicates the extent of water quality degradation. Similarly Total and Feacal Coliform which indicate presence of pathogens in water are also of major concern. As per the Primary Water Quality Criteria, the water body falls under 'D' class (Table -2.0). The concentrations of Dissolved Oxygen, Biochemical Oxygen Demand, Total and Feacal Coliform of the monitoring station are depicted in Figs 1.0 - 4.0.

- II. **Ward'Lake:** The main sources of pollution of this water body are the dumping of solid waste, waste water discharge from the commercial and government buildings located around it. Human activities such as boating, tourism also affect the aquatic ecosystem.

The monitoring results obtained during the year 2004, revealed that the Dissolved Oxygen concentration is meeting the desired class. The value ranges from 6.0mg/l to 7.5mg/l. The data also indicates that organic and bacterial contaminations are the main critical pollutant in the water body. The Biochemical Oxygen Demand value is above the desired class, it ranges from 8.0mg/l to 13.0mg/l. The Total and Feacal Coliform are high indicating the deteriorating condition of the lake. As per the Primary Water Quality Criteria, the lake falls under 'D' class (Table -2.0). The concentrations with respect to Dissolved Oxygen, Biochemical Oxygen Demand, Total and Feacal Coliform are presented in Figs 1.0 to 4.0.

- III. **Umtrew River:** The sources of pollution of the water body at the monitored location discharge of untreated solid and liquid waste from the residential areas, open defecation, dumping of solid waste etc. (Photo 1.0) Industrial estate is located in the upstream of the monitored location may also perhaps contribute to pollution of the river. Other activities which disturb the aquatic

ecosystem are the sand dredging and recovery, boating, washing, bathing and cattle wading.

The monitoring results indicate the Biochemical Oxygen Demand is above the limit for the desired class, it ranges from 5.7 mg/l. to 8.05mg/l.. The Total and Fecal Coliforms are also detected although their numbers are within the limit for the desired class.

As per the Primary Water Quality Criteria, the river water falls under 'C' class (Table -2.0). The concentration with respect to Dissolved Oxygen, Biochemical Oxygen Demand, Total and Fecal Coliform are presented in Figs 1.0 to 4.0

- IV. **Kyrhukhla River:** Located in the coal mining area of Jaintia Hills District, the river is highly acidic due to acid mine drainage. Apart from coal mining activities, the river is also polluted due to solid and waste water discharge from coal labour settlement, open defecation etc.

The monitoring result revealed that the pH value is as low as 3.0. The Biochemical Oxygen Demand value is above the limit for the desired class (3mg/L) and ranges from 4.8mg/l. to 8.0mg/l. The concentration with respect to Dissolved Oxygen, Biochemical Oxygen Demand, Total and Fecal Coliform are presented in Figs 1.0 to 4.0.

- V. **Thadlaskein Lake:** The water quality of the lake is affected by surface run off from surrounding areas, and agricultural activities. Other activities which may contribute towards pollution are tourist activity, fishing, washing etc.

The results show the presence of organic pollutants such as Biochemical Oxygen Demand. Total and Fecal Coliform are also detected. The lake water falls under 'C' class as per Primary Water Quality Criteria (Table -2.0). The concentration with respect to Dissolved Oxygen, Biochemical Oxygen Demand, Total and Fecal Coliform of the monitoring station is depicted in Fig 1.0 to Fig 4.0.

- VI. **Myntdu River:** The main sources of pollution of this river are the solid and waste water discharge from the residential areas, dumping of solid waste, spoil and garbage, agricultural activities. Other activities which affect the water quality are sand recovery and dredging, fishing washing, bathing and cattle wading.

The monitoring results indicate that the presence of Total and Fecal Coliform. As per the Primary Water Quality Criteria, the river water falls under 'C' class (Table -2.0). The concentration with respect to Dissolved Oxygen, Biochemical Oxygen Demand, Total and Fecal Coliform are depicted in Fig 1.0 to Fig 4.0.

- VII. **Ganol River:** The main sources of pollution of the water body are untreated and waste water discharge from the residential areas, agricultural activities,

and open defecation, dumping of solid waste, spoils and garbage on the bank of the river. Other activities which may disturb the aquatic ecosystem are cattle wading, quarrying, fishing, sand recovery, stone crushing, and construction work at upstream, washing, bathing.

The monitoring results show the contamination of water body by Total & Feacal Coliform. As per Primary Water Quality Criteria, the river water falls under 'B' class (Table -2.0). The concentration with respect to Dissolved Oxygen, Biochemical Oxygen Demand, Total and Feacal Coliform are depicted in Figs 1.0 to 4.0

- VIII. **Simsang River:** The main sources of pollution of this water body are the discharge of untreated solid & waste water from municipal areas, open defecation, dumping of solid waste, spoils and garbage. Other activities likely to disturb the aquatic ecosystem are construction work at the upstream, fishing, bathing, sand recovery & dredging.

The monitoring results indicate the contamination of river water by Total and Feacal Coliform. As per the Primary Water Quality Criteria, the river water falls under 'B' class (Table -2.0). The concentration with respect to Dissolved Oxygen, Biochemical Oxygen Demand, Total and Feacal Coliform are depicted in Figs 1.0 to 4.0

5.2.1.2: Physico-chemical & bacteriological parameters of Ground Water Quality:

The monitoring results revealed the presence of Total and Feacal Coliform. Presence of Coliform in all monitored ground water indicate the possibility of ground water contamination.

The concentrations of Dissolved Oxygen, Biochemical Oxygen Demand, Total and Feacal Coliform are depicted in Fig 1.0 to Fig 4.0



Photo: 1.0

Solid Waste Disposal on the Bank of Umtrew River

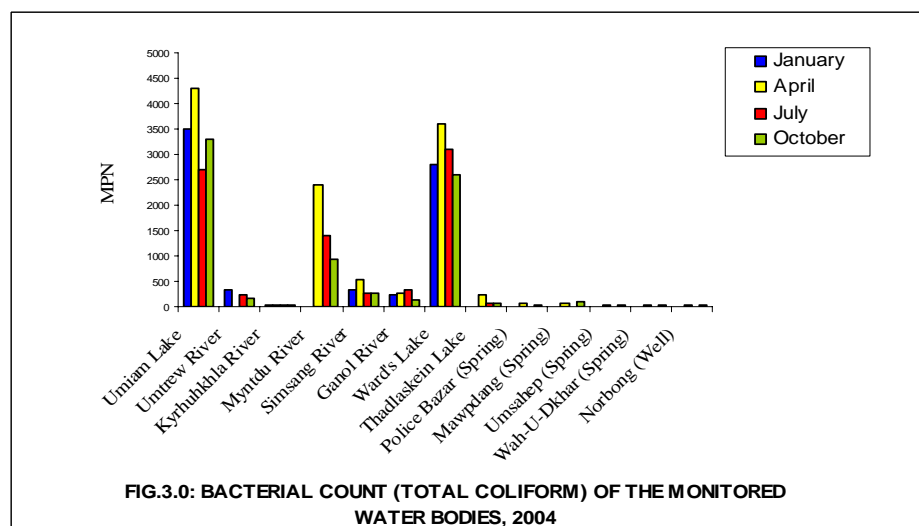
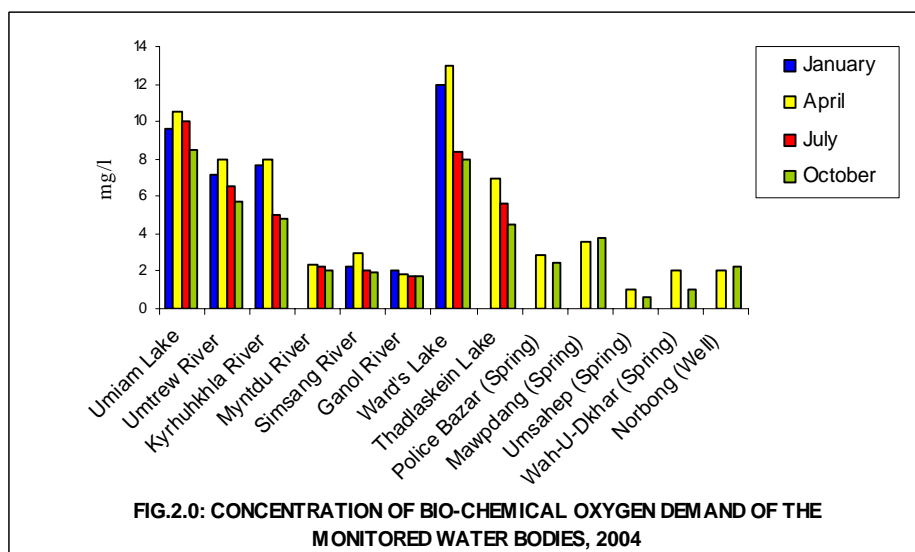
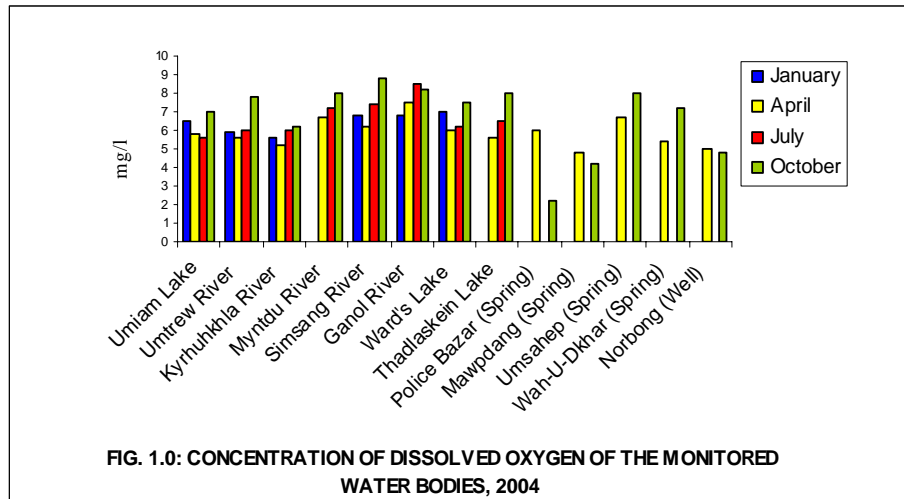
Table -2.0: Primary water quality criteria for various uses of fresh waters, as laid down by the Central Pollution Control Board

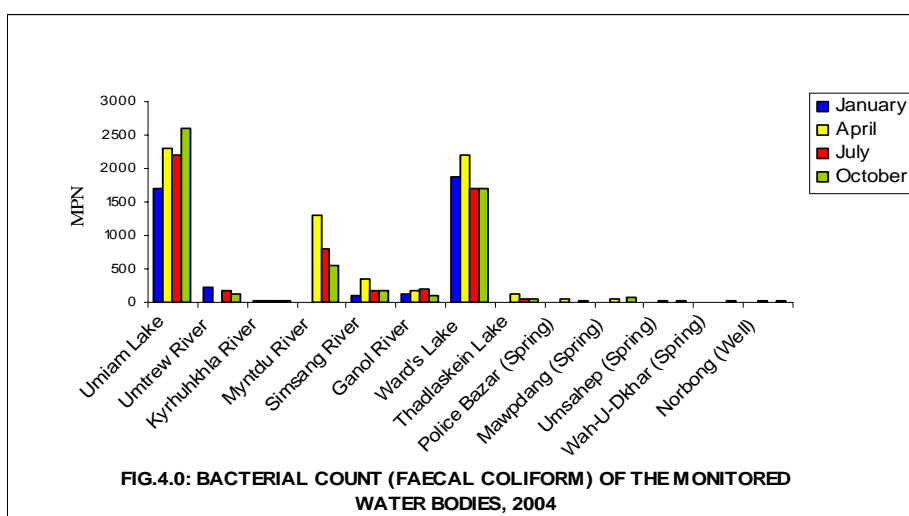
Sl.No.	Characteristics	A*	B*	C*	D*	E*
1.	Dissolved Oxygen (DO),mg/l,Min	6	5	4	4	-
2.	Biochemical Oxygen Demand(BOD),mg/l,Max	2	3	3	-	-
3.	Total Coliform organism** MPN/100ml, Max.	50	500	5,000	-	-
4.	pH value	6.5-8.5	6.5-8.5	6.0-9.0	6.5-8.5	6.5-8.5
5.	Free ammonia (as N), mg/l,Max	-	-	-	1.2	-
6.	Electrical conductivity, micromhos/cm,Max.	-	-	-	-	2,250
7/	Sodium adsorption ratio,Max	-	-	-	-	26.0
8.	Boron,mg/l,Max	-	-	-	-	2.0

Source: CPCB Publication

Use class: (A) drinking water source without conventional treatment but after disinfection, (B) outdoor bathing organized, (C) drinking water source with conventional treatment followed by disinfection, (D) propagation of wildlife, fisheries, (E) irrigation, industrial cooling controlled waste disposal.**If coliforms are found to be more than the prescribed tolerance limits the criteria for coliforms shall

be satisfied if not more than 20% of samples show more than the tolerance limits specified, and not more than 5% of samples show value more than 4 times the tolerance limits. There should be no visible discharge of domestic and industrial wastes into Class A waters. In case of Class B and C the discharge shall be so regulated /treated as to ensure maintenance of the stream standards.





5.2.1.3: Concentration of Heavy metals in Surface Water Bodies

The Board is monitoring the concentration of Heavy metals of the following 8(eight) surface water bodies in the state, under the National Water Monitoring Programme (NWMP), sponsored by CPCB. The monitoring is done once in a year. Table-3.0 presents the data on concentration of Heavy Metals in Surface Water Bodies.

Table-3.0: Concentration of Heavy Metals in Surface Water Bodies, 2005.

Sl. No.	Surface Water Bodies	PARAMETERS							
		Iron (µ/l)	Nickel (µ/l)	Copper (µ/l)	Zinc (µ/l)	Lead (µ/l)	Chromium (µ/l)	Cadmium (µ/l)	Arsenic (µ/l)
1.	Umiam lake	0.18	BDL	BDL	BDL	BDL	BDL	BDL	Nil
2.	Ward's Lake	0.17	BDL	BDL	0.025	BDL	BDL	BDL	Nil
3.	Umtrew river	0.16	BDL	BDL	0.008	BDL	BDL	BDL	Nil
4.	Kyrhuhkhla river	2.3	BDL	0.001	0.015	BDL	BDL	BDL	Nil
5.	Thadlaskein	0.34	BDL	BDL	0.053	BDL	BDL	BDL	Nil
6.	Myntdu river	0.60	BDL	BDL	0.030	BDL	BDL	BDL	Nil
7.	Ganol river	0.13	BDL	BDL	0.012	BDL	BDL	BDL	Nil
8.	Simsang river	0.13	BDL	BDL	0.006	BDL	BDL	BDL	Nil

5.2.1.4: Bio-monitoring of Surface Water Bodies, 2005

Bio-monitoring of the following 8(eight) surface water bodies in the state, under the National Water Monitoring Programme (NWMP), sponsored by CPCB has been monitored by the Board since 2002 on half yearly basis (Photo.2.0). The monitoring of the study helps in the classification and zoning of water bodies according to their

ecological sustenance and degradation. The data generated are being analyzed computing the respective biological indices are presented in Table 4.0.

Table-4.0: Bio-Monitoring of Surface Water Bodies, 2005.

Sl. No.	Surface Water Bodies	Saprobic Score	Diversity Score	Biological Water Quality Class	Biological Water Quality
1.	Umtrew river	5.0-5.5	0.5-	C	Moderate Pollution
2.	Kyrhukhla river	4.8-	0.4-	C	Moderate Pollution
3.	Umiam lake	4.8-5.0	0.35-0.40	C	Moderate Pollution
4.	Ward's lake	2.8-3.0	0.3-0.35	D	Heavy Pollution
5.	Thadlaskein lake	5.7-	0.5-	C	Moderate Pollution
6.	Myntdu river	5.8-	0.5-	C	Moderate Pollution
7.	Ganol river	5.4-5.8	0.5-	C	Moderate Pollution
8.	Simsang river	6.0-6.2	0.5-0.57	B	Slight Pollution



Photo 2.0: Bio-Monitoring Sampling of Surface Water Bodies

5.2(B) Analysis of water samples received from government departments and private agencies

In addition to the regular programme, the Board is also analyzing the water quality of water samples used for drinking , construction, etc received from government departments and private agencies .A total of 232 (two hundred thirty two) such samples were tested during the year.

5.3 Monitoring of the Quality of Leachates from Solid Waste Dumping Site at Mawiong

The Board is monitoring the quality of Leachates from the solid waste dumping ground at Mawiong. The result presented in Table 5.0 indicates that the concentrations of Total Dissolved Solids, Total Suspended Solid, Biochemical Oxygen Demand, Chloride were found to be above the prescribed standards. Also the concentrations of Chemical Oxygen Demand and zinc were found to be high.

Table 5.0: LEACHATE QUALITY OF SHILLONG MUNICIPAL DUMPING GROUND, MAWIONG

Sl No.	Parameters	Standards for Disposal on Land	Results
1.	pH	5.5 – 9.0	11.0
2.	Total Dissolved Solids (mg/l)	2100.0	9614.0
3.	Total Suspended Solids (mg/l)	200.0	1075.4
4.	Chemical Oxygen Demand (mg/l)	-	1950.0
5.	Bio-Chemical Oxygen Demand (mg/l)	100.0	1240.5
6.	Ammonia Nitrogen (mg/l)	-	55.3
7.	Total Kjeldahl Nitrogen (mg/l)	-	90.0
8.	Chloride (mg/l)	600.0	1142.2
9.	Cadmium (mg/l)	-	0.36
10.	Chromium (mg/l)	-	8.2
11.	Copper (mg/l)	-	1.6
12.	Lead (mg/l)	-	5.2
13.	Nickel (mg/l)	-	14.0
14.	Zinc (mg/l)	-	261.7

5.3.1 MONITORING OF THE QUALITY OF COMPOST FROM SOLID WASTE DUMPING SITE AT MAWIONG

The Board is monitoring the quality of compost from the solid waste dumping ground at Mawiong with respect to heavy metals concentration. The result presented in Table 6.0 shows that the concentration of Chromium is found to be above the prescribed standards. Other parameters tested were within the prescribed standards.

Table 6.0: QUALITY OF COMPOST OF SHILLONG MUNICIPAL DUMPING GROUND, MAWIONG

Sl. No	Parameters	Standards	Results
1.	Cadmium (mg/kg)	5.0	1.0
2.	Chromium (mg/kg)	50.0	71.0
3.	Copper (mg/kg)	300.0	133.0
4.	Lead (mg/kg)	100.0	41.0
5.	Nickel (mg/kg)	50.0	31.0
6.	Zinc (mg/kg)	1000.0	373.0

5.4 NOISE LEVEL MONITORING

5.4.1 NOISE LEVEL MONITORING DURING DIWALI FESTIVAL

Monitoring of noise levels was conducted in Shillong on the 9th November 2004 before Diwali and on Diwali Day i.e. the 12th November 2004 to compare the noise levels during day time and night time before and on the Festival day. The monitoring was conducted in compliance with the Govt. of India Notification NO. G.S.R. 682 (E) dated 5th October, 1999 and the interim directions of the Honorable Supreme Court.

Ambient Noise levels before and on Diwali day during day time monitoring (Table-1) indicates that before Diwali day almost all of the residential areas monitored have exceeded the prescribed standard, mainly due to vehicular noise. The readings taken in the commercial areas are also on the higher side due to the same reason. All the Silence Zones are in gross violation of the prescribed standard basically due to their close proximity to busy roads and intersections. On Diwali day, readings taken in all locations are higher than the prescribed standards. However, the celebrations this year seem to be subdued as there are no readings grossly violating the standards.

Ambient Noise levels before and on Diwali day during night time monitoring (Table-2) also indicates that the ambient noise levels before Diwali day have exceeded the prescribed standard in almost all the residential areas, commercial areas and Silence Zones. On Diwali Day, the ambient night noise in all locations observed to be slightly higher than that recorded before Diwali.

It may be noted that the ambient noise level before and after Diwali 2004 at some of the monitored places are lower as compared to the values recorded during Diwali 2003 .

The monitoring programme conducted shows that the noise levels in Shillong are above the standards particularly in areas near busy roads and intersections but Diwali celebrations have definitely further added to the increased noise levels all over the city and this might have lead to detrimental effect on human health.



TABLE 1.0 AMBIENT NOISE LEVELS BEFORE AND ON DIWALI FESTIVAL DURING DAY TIME MONITORING

SL. NO.	PLACE	CATEGORY	AMBIENT NOISE STANDARDS [dB (A) Leq]	NOISE MONITORED			
				BEFORE DIWALI		ON DIWALI DAY	
				9 th NOVEMBER, 2004		12 th NOVEMBER, 2004	
				TIME	READING [dB (A) Leq]	TIME	READING [dB (A) Leq]
1.	Laitumkhrah (Lummawrie)	Residential	55	2:40 P.M.	67.5	2:50 P.M.	77.0
2.	Lachumiere	Residential	55	3:26 P.M.	62.7	3:37 P.M.	63.2
3.	Jaiaw Main Road	Residential	55	3:05 P.M.	68.9	4:55 P.M.	64.6
4.	Upper Mawprem	Residential	55	4:17 P.M.	60.1	4:30 P.M.	70.6
5.	Rilbong	Residential	55	3:55 P.M.	47.8	4:20 P.M.	57.4
6.	Lumpyngngad	Residential	55	2:10 P.M.	56.6	2:25 P.M.	57.2
7.	New Colony	Residential	55	2:54 P.M.	58.4	3:25 P.M.	56.2
8.	Laitumkhrah Main Road	Commercial	65	2:45 P.M.	71.7	3:00 P.M.	71.4
9.	Laitumkhrah Bazaar	Commercial	65	2:47 P.M.	60.3	2:55 P.M.	68.7
10.	Laitumkhrah Police Point	Commercial	65	2:48 P.M.	74.1	3:27 P.M.	67.3
11.	Dhankheti	Commercial	65	3:20 P.M.	79.6	3:33 P.M.	78.2
12.	Motphran	Commercial	65	6:25 P.M.	68.9	6:10 P.M.	76.3
13.	Paltan Bazaar	Commercial	65	4:50 P.M.	74.4	6:15 P.M.	73.9
14.	Mawprem Taxi Stand	Commercial	65	4:20 P.M.	67.7	4:35 P.M.	61.9
15.	Barapathar Bazaar	Commercial	65	4:15 P.M.	68.8	4:25 P.M.	70.9
16.	Jhalupara	Commercial	65	4:10 P.M.	63.9	4:23 P.M.	69.9
17.	Iew Dak (Laban)	Commercial	65	3:35 P.M.	59.0	3:55 P.M.	66.8
18.	Last Stop	Commercial	65	3:43 P.M.	74.6	3:57 P.M.	66.4
19.	Bishnupur	Commercial	65	3:45 P.M.	67.4	4:03 P.M.	67.9
20.	Malki Point	Commercial	65	3:24 P.M.	72.2	3:35 P.M.	71.7
21.	Rynjah Bazaar	Commercial	65	2:24 P.M.	70.2	2:40 P.M.	69.1
22.	Polo Bazaar	Commercial	65	5:25 P.M.	74.9	5:15 P.M.	73.5

ANNUAL REPORT 2004-2005



23.	Keating Road	Commercial	65	5:35 P.M.	64.0	5:25 P.M.	88.4
24.	Police Bazaar (Police Point)	Commercial	65	6:00 P.M.	70.4	5:55 P.M.	68.6
25.	Police Bazaar (R.B. Store)	Commercial	65	6:10 P.M.	68.8	5:50 P.M.	68.5
26.	Police Bazaar (Payal Cinema)	Commercial	65	6:15 P.M.	57.2	5:45 P.M.	93.2
27.	Jail Road	Commercial	65	5:40 P.M.	70.5	5:35 P.M.	87.8
28.	Nazareth Hospital	Silence Zone	50	2:50 P.M.	50.8	3:03 P.M.	51.2
29.	Don Bosco Square	Silence Zone	50	3:05 P.M.	79.1	3:30 P.M.	72.6
30.	Civil Hospital	Silence Zone	50	3:30 P.M.	62.2	3:50 P.M.	64.3
31.	K.J.P. Hospital	Silence Zone	50	5:02 P.M.	53.5	4:57 P.M.	61.6
32.	District Council	Silence Zone	50	4:44 P.M.	80.7	4:40 P.M.	71.6
33.	Bethany Hospital	Silence Zone	50	2:16 P.M.	68.9	2:35 P.M.	67.0
34.	Ganesh Das Hospital	Silence Zone	50	5:20 P.M.	49.6	5:05 P.M.	44.9
35.	Main Secretariat	Silence Zone	50	5:32 P.M.	69.4	3:40 P.M.	67.8

NOTE: Ambient Noise Standards are taken from the Noise Pollution (Regulation & Control) Rules, 2000.



TABLE 2.0 AMBIENT NOISE LEVELS BEFORE AND ON DIWALI FESTIVAL DURING NIGHT TIME MONITORING

SL. NO.	PLACE	CATEGORY	AMBIENT NOISE STANDARDS [dB (A) Leq]	NOISE MONITORED			
				BEFORE DIWALI		ON DIWALI DAY	
				9 th NOVEMBER, 2004		12 th NOVEMBER, 2004	
				TIME	READING [dB (A) Leq]	TIME	READING [dB (A) Leq]
1.	Laitumkhrah (Lummawrie)	Residential	45	12:23 P.M.	48.4	12:07 P.M.	57.8
2.	Lachumiere	Residential	45	10:45 P.M.	50.8	10:15 P.M.	61.6
3.	Jaiaw Main Road	Residential	45	11:30 P.M.	55.2	11:00 P.M.	68.5
4.	Upper Mawprem	Residential	45	11:15 P.M.	49.5	10:42 P.M.	81.9
5.	Rilbong	Residential	45	11:02 P.M.	42.0	10:30 P.M.	70.3
6.	Lumpyngngad	Residential	45	12:28 P.M.	42.3	12:13 P.M.	50.7
7.	New Colony	Residential	45	12:15 P.M.	44.9	11:57 P.M.	50.7
8.	Laitumkhrah Main Road	Commercial	55	12:22 P.M.	60.5	12:04 P.M.	62.3
9.	Laitumkhrah Bazaar	Commercial	55	12:20 P.M.	60.0	12:05 P.M.	52.9
10.	Laitumkhrah Police Point	Commercial	55	12:17 P.M.	52.7	11:55 P.M.	61.4
11.	Dhankheti	Commercial	55	12:07 P.M.	75.3	11:47 P.M.	72.2
12.	Motphran	Commercial	55	11:25 P.M.	58.7	10:56 P.M.	75.2
13.	Paltan Bazaar	Commercial	55	11:22 P.M.	48.7	10:55 P.M.	77.5
14.	Mawprem Taxi Stand	Commercial	55	11:17 P.M.	53.8	10:50 P.M.	66.5
15.	Barapathar Bazaar	Commercial	55	11:12 P.M.	55.0	10:41 P.M.	78.1
16.	Jhalupara	Commercial	55	11:10 P.M.	48.2	10:40 P.M.	75.6
17.	Iew Dak (Laban)	Commercial	55	10:53 P.M.	45.0	10:22 P.M.	75.2
18.	Last Stop	Commercial	55	10:55 P.M.	48.8	10:25 P.M.	82.1
19.	Bishnupur	Commercial	55	11:00 P.M.	41.8	10:27 P.M.	76.9
20.	Malki Point	Commercial	55	10:47 P.M.	70.2	11:45 P.M.	69.9

ANNUAL REPORT 2004-2005



21.	Rynjah Bazaar	Commercial	55	12:36 P.M.	48.3	12:20 P.M.	46.8
22.	Polo Bazaar	Commercial	55	11:55 P.M.	50.9	11:40 P.M.	66.5
23.	Keating Road	Commercial	55	10:35 P.M.	53.2	10:10 P.M.	76.9
24.	Police Bazaar (Police Point)	Commercial	55	10:05 P.M.	69.0	10:07 P.M.	78.4
25.	Police Bazaar (R.B. Store)	Commercial	55	10:15 P.M.	58.8	10:00 P.M.	93.1
26.	Police Bazaar (Payal Cinema)	Commercial	55	10:10 P.M.	59.8	10:02 P.M.	74.3
27.	Jail Road	Commercial	55	10:25 P.M.	54.7	10:05 P.M.	87.1
28.	Nazareth Hospital	Silence Zone	40	12:18 P.M.	44.2	12:00 P.M.	54.9
29.	Don Bosco Square	Silence Zone	40	12:12 P.M.	61.4	11:52 P.M.	61.8
30.	Civil Hospital	Silence Zone	40	10:50 P.M.	62.4	10:20 P.M.	66.1
31.	K.J.P. Hospital	Silence Zone	40	11:30 P.M.	46.6	11:02 P.M.	68.1
32.	District Council	Silence Zone	40	11:20 P.M.	54.2	10:51 P.M.	80.1
33.	Bethany Hospital	Silence Zone	40	12:31 P.M.	47.7	12:15 P.M.	49.8
34.	Ganesh Das Hospital	Silence Zone	40	12:00 P.M.	45.0	11:15 P.M.	63.8
35.	Main Secretariat	Silence Zone	40	10:40 P.M.	65.8	10:12 P.M.	67.8

NOTE: Ambient Noise Standards are taken from the Noise Pollution (Regulation & Control) Rules, 2000.

5.4.2 AMBIENT AIR QUALITY MONITORING BEFORE AND DURING DIWALI FESTIVAL

The ambient air quality monitoring was carried out before and during Diwali festival at the Board's Premises (Table: 1.0) and at MUDA Complex, Police Bazar (Table: 2.0), Shillong. On 9th & 12th November, 2004. The data indicates that the Suspended Particulate Matter (SPM), Respirable Particulate Matter (RSPM) concentrations were above the permissible limits of Ambient Air Quality Standards (National) at MUDA Complex, Police Bazar (Table.2) as per EPA notification: GSA 176(E), April 2002, 1996.

TABLE: 1.0: AMBIENT AIR QUALITY MONITORING BEFORE & DURING DIWALI FESTIVAL

PARAMETERS TESTED (AVERAGE)	BEFORE DIWALI Festival	DURING DIWALI Festival
SPM ($\mu\text{g}/\text{m}^3$)	71.7	80.6
RSPM ($\mu\text{g}/\text{m}^3$)	57.8	63.7
SO ₂ ($\mu\text{g}/\text{m}^3$)	BDL	BDL
NO _x ($\mu\text{g}/\text{m}^3$)	2.5	3.9

(9th November 12th November) 2004, AT BOARD'S PREMISES

TABLE: 2.0: AMBIENT AIR QUALITY MONITORING BEFORE AND DURING DIWALI

PARAMETERS TESTED (AVERAGE)	BEFORE DIWALI Festival	DURING DIWALI Festival
SPM ($\mu\text{g}/\text{m}^3$)	191.0	412.3
RSPM ($\mu\text{g}/\text{m}^3$)	153.7	292.2
SO ₂ ($\mu\text{g}/\text{m}^3$)	BDL	2.0
NO _x ($\mu\text{g}/\text{m}^3$)	15.4	21.6

FESTIVAL (9th November 12th November) 2004, AT MUDA COMPLEX,
POLICE BAZAR

6

ENVIRONMENTAL RESEARCH

During the year 2004-2005, the Board continued with the following study projects:

A. "Bio-mapping of some important perennial rivers of Meghalaya"

The Board has obtained the sanction from the Central Pollution Control Board for the proposed study project entitled "Bio-Mapping of Perennial Rivers of Meghalaya". The report of the one year data has already been prepared by Central Pollution Control Board, Delhi and Meghalaya State pollution Control Board. The Board has undertaken additional field work during 2003-2004 to support the findings and the final report of the data generated under the study has been

published by CPCB, Delhi during the year 2004-2005 in consultation with MSPCB. The rivers monitored under the study include Umkhrah, Umshyrpi, Umiam Mawphlang, Nongstoin, Myntdu, Lubha, Umngot, Kynshi, Simsang & Ganol.

B. “Studies and Evaluation of Environmental and Socio-Impact of Coal Mining Impact in Jaintia Hills.”

The aims of study were to evaluate the quality of ambient air, workroom environment ground water, surface water etc. The analysis of major and trace elements was also the part of the study. The scope of the project was to evolve environmentally friendly technologies and planning for reclamation of the mined degraded land together and the study the socio economic impact of these activities.

The Board initiated the Programme during 2000-2001. Under the study, two years data were generated to get the seasonal variations and trends. The preliminary report of the work done has been submitted to CPCB The study works is continuing during the current year.

C. “Study of Water Quality of Umkhrah River”

The Board has undertaken the study Programme entitled “Assessment of Water Quality of Umkhrah River” in collaboration with center for Environmental studies, NEHU, Shillong during 2001-2002. The main objective of the study was to assess the pollution load in terms of physico-chemical and bacteriological parameters of the river water and to identify the sources of pollution so as to suggest/recommend suitable mitigating measures for improvement of the river water quality. Monitoring works have been started in the last part of the year 2001 and continued during the year 2002-2003. The final report of the study has been submitted to the concerned Govt. Deptts. for implementation of its findings.

7

ENVIRONMENTAL TRAINING

The Officers & Staff of the Board attended several training courses, workshops & seminars sponsored by the Ministry of Environment and Forests, Government of India, the Central Pollution Control Board, Delhi and other agencies. The list of the Official, who attended the training programmes during the year, is given in **Annexure-VII**.

8

ENVIRONMENTAL AWARENESS AND PUBLIC PARTICIPATION

The Board was represented in a Mass Awareness Programme organized by the Office of the Deputy Commissioner, East Khasi Hills District in June 2004. The programme was organized to celebrate the Year of Scientific Awareness – 2004.

The Board has been assisting the PHE Department, the Shillong Municipal Board, etc. in monitoring water quality of Water Supply Schemes to ensure supply of safe drinking water to the public in the State. Based on the Board's reports on water

quality status, some NGOs have launched the cleaning drives of rivers in Shillong like Umshyrpi, Umkhrah and others.

9 ENVIRONMENTAL STANDARDS INCLUDING THE TIME SCHEDULE FOR THEIR ENFORCEMENT

The Board is adopting the standards prescribed by the Central Pollution Control Board and Ministry of Environment and Forests, Government of India. In case, the Standards of the said organizations are not available the Board follows the standards prescribed by the Indian Standards Institution. The Board is maintaining the enforcement Schedule prescribed by the Central pollution Control Board and Ministry of Environment and Forests, Government of India in respects of 17 categories of industries. However, in case of other industries, it has its own enforcement schedule, which is specified at the time of granting of "Consent to Establish" and "Consent to Operate".

10 PROSECUTIONS AND CONVICTIONS FOR ENVIRONMENTAL CONTROL

11.1 SHOWCAUSE NOTICES ISSUED TO DEFAULTING INDUSTRIES

During the year, 61(Sixty one) Show Cause Notices were issued to defaulting industrial units. List is placed as **Annexure- VI (A)**

11.2 CLOSURE OF INDUSTRIAL POLLUTING UNIT

During the year, 70 (Seventy) Closure Notices were issued to defaulting industrial units. List is appended as **Annexure – VI (B)**



11 FINANCE AND ACCOUNTS OF THE BOARD

The Receipt and Payment of the Board for the financial year 2004-2005 is as shown below:

RECEIPT A/C		PAYMENT A/C	
<u>Opening Balance</u>			
Cash in hand	: 753.26	Fixed Assets	: 888535.00
Cash at Bank:			
In saving Bank Account:		<u>Other Assets:</u>	
		Scientific Instruments	
With Indian Overseas Bank		and	
Shillong on:		Office appliances	: 5160231.00
Account No 3488	: (22123.36)	Tools and Plants	: --- 6048766.00
Account No 425	: 2560.00		
Account No 6757	: 1909011.53		
Indian Bank Shillong	: (14076.40)	<u>Revenue Expenditure:</u>	
Bank of India,		Administration:	
Shillong on:		Pay & allowances to	
Account No.3518	: ---	Officers & staff	: 6794612.00
Account No.544	: (14902.50)	Contribution to P.F.	: 873606.00
Account No.1242	: 6086582.68	Contingents Expenditure	: 554946.70 8223164.70
Account No.1090	: 326978.60		
Account No.1987	: 1130205.11	Board Laboratory	: 98274.00
		Running and	
Account No.3006	: 191650.54	Maintenance	
		of vehicle	: 166608.77
		Repair and	
Account No.3100	: 3370947.14	Maintenance	: 12805.00
Account No.3226	: 80259.00	Advances	: 72100.00
Vijaya Bank on:		Deposits	: 1061436.00
Account No 7658	: 4604564.00	Other Expenditure	: 5560.00
In Fixed Deposited			
Account:		Water cess remittance	: 1017069.00

ANNUAL REPORT 2004-2005



With Indian Overseas Bank		
Shillong	: 7482421.00	
Bank of India, Shillong	: <u>2682133.00</u>	<u>27816963.60</u>

Grant Received from:

Ministry of Environment & Forests, Govt. of India	: 513500.00	
Department of Public Health & Engineering	: 8074000.00	
Central Pollution Control Board, Govt. of India	: <u>779370.00</u>	<u>9366870.00</u>

Grant in aid received from:

Other Agencies	: ---	
Fees	: 3095559.00	
Interest on Investment	: 613658.00	
Miscellaneous receipt	: 65409.00	
Miscellaneous advances	: 166670.00	
Deposits	: <u>1250396.00</u>	<u>5191692.00</u>

Staff

Recoveries/Deductions:

House Rent	: 552.00	
Income Tax	: 51073.00	
Professional Tax	: 32355.00	
EPF	: 390599.00	
GPF	: 110000.00	

Other Recoveries:

Forest Royalty	: 69787.00
House Rent	: 552.00
Income Tax	: 51073.00
Professional Tax	: 32355.00
Sales tax deducted at source	: 5551.00

Closing Balance:

Cash in hand	: 1162.26
Cash at Bank:	
In saving Bank Account:	
With Indian Overseas Bank	
Shillong on:	
Account No 3488	: (22123.36)
Account No 425	: ---
Account No 6757	: 1947347.38
Indian Bank Shillong	: (14076.40)
Bank of India, Shillong on:	
Account No.3518	: 137138.50
Account No.544	: (14902.50)
Account No.1242	: 7676862.47
Account No.1090	: 737442.60
Account No.1987	: 1633609.15
Account No.3006	: 160297.78
Account No.3100	: 3976258.25
Account No.3226	: 83479.00
Vijaya Bank on:	
Account No 7658	: 4393985.00
In Fixed Deposited Account:	

ANNUAL REPORT 2004-2005



Forest Royalties	:	13999.00	With Indian Overseas Bank	:	3872233.00	
Sale Tax deducted at source	:	1844.00	Shillong Bank of India, Shillong	:	<u>1542133.00</u>	26110846.13
Total Rupees		<u>42975947.60</u>				<u>42975947.60</u>

1. Functions and Activities of the Board under Rules notified under the E (P) Act, 1986 are as follows:

a. Hazardous Waste (Management & Handling) Rules, 1989

- Issue of authorization for handling of hazardous waste to occupier and operators in the State.
- Preparation of inventory of hazardous waste generation in the State.
- Assisting the State Govt. in inventory of disposal sites and conduct of Environmental Impact studies.
- Monitoring of facilities/infrastructure/technical capabilities in hazardous wastes handling units.

As a follow-up to the Hon'ble Supreme Court Direction dated 14-10-1995 in Writ Petition (C) No.657 of 1995, the Board issued Directions to the 2(two) units, which were granted Authorization viz. M/S Matiz Metals (P) Ltd. E.P.I.P., Byrnihat and M/S Hindustan Coca Cola Beverages (P) Ltd, Byrnihat; to prominently display on a board/hoarding outside their gate all the relevant information on quantity and nature of the hazardous wastes being generated in the plant. Verification of compliance to the Directions was carried out and the two units were subsequently granted renewal of their Authorizations for a further period of one year.

b. Bio-Medical Waste (Management & Handling) Rules, 1998.

The Board, as the prescribed authority for implementation of the Rules, has to perform the following functions & activities:-

- Inventorisation of sources generating bio-medical waste.
- Issuance of authorization to institutions generating bio-medical waste.
- Monitoring of compliance to the prescribed norms and standards for handling and management of bio-medical waste by the concerned institutions.
- Advice the Government for setting up of common facility for treatment and disposal of bio-medical waste.
- Enforcement of the provisions of the Rules in the State.
- Submission of Annual Status Report on management of bio-medical waste in the State.

As the prescribed authority, the Board has undertaken the following activities in implementing the provision of the Rules:-

- As on 31-3-2005, the Board has identified 130 Health Care Facilities (HCF) generating bio-medical wastes which include Hospitals, Nursing Homes, Pathological Clinics, CHCs, PHCs, Dispensaries, and Veterinary Hospitals, etc. Of these, 129 HCFs has applied for authorization and 23 authorizations have

been issued. The authorizations to 105 HCFs run by State Government have been withheld due to non-payment of the prescribed authorization fees.

- Annual Status Report for the year 2004-05 prepared on the basis of the Annual Reports submitted by the HCFs on handling and management of bio-medical wastes in the State has been submitted to the CPCB as required under the Rules.
- The Board has issued Directions to 2(two) defaulting Government hospitals and the Director of Health Services (MI) for failing to comply with provisions of the Rules.
- The Board has also taken up with the Urban Affairs Department for setting up of common Bio-medical waste treatment and disposal facility.

(c) *Municipal Solid Wastes (Management & Handling) Rules, 2000*

The functions of the Board under the Rules include:-

- Issuance of Authorization to the municipal authorities or the operator of a facility for setting up of waste processing and disposal facility and landfills.
- Monitoring the performance of waste processing and disposal facility including compliance with the standards in terms of ground water, ambient air, leachate quality, compost quality, etc.
- Submission of Annual Status Report on management of MSW in the State to the Central Pollution Control Board.

Under the Rules, the Board has issued authorization to Shillong Municipal Board (SMB) for setting and operation of the compost plant at Mawiong and regularly monitors its performance and compliance to the prescribed standards. The Board wrote to other Municipal Boards to apply for Authorization under the Rules and has also to the SMB to apply for renewal of its Authorization. All the Municipal Boards were also requested to prepare time bound Action Plan for management of municipal waste in accordance with the provisions of the Rules.

Under the Order of the Hon'ble Supreme Court of India dated 26-07-2004, with respect to Writ Petition (Civil) No.888/1996 on the matter of implementation of the Rules, the Board wrote to the Urban Affairs Department and the Under Secretary to the Government of Meghalaya, Revenue Department informing about the Order and suggesting to take necessary action in identifying landfill sites for all municipal bodies in the state and to constitute a Task Force comprising the State Pollution Control Board, Urban Affairs Department, Revenue Department and Municipal Authorities and to submit quarterly report to the Hon'ble Supreme Court in compliance with the Order.

Under the Order of the Hon'ble Supreme Court of India dated 04-10-2004, whereby action plan for management of municipal solid waste in metro cities and state capitals were to be prepared, the Shillong Municipal Board submitted its action plan which was forwarded by the Board to the Central Pollution Control Board, Delhi.

An application for authorization in Form 1 was received from the Williamnagar Municipal Board and after thorough consideration, the Authorization was granted by the Board.

Under the Order of the Hon'ble Supreme Court of India dated 26-07-2004, officials of the Board visited all the Municipal Boards in the state to help in filling up Form – 2 for submission of Annual Report on Municipal Solid Wastes management. The Annual Reports for the year 2003-04 were compiled and the consolidated Annual Status Report was submitted to CPCB as required under the Rules.

(d) *Batteries (Management & Handling) Rules, 2001.*

Under the Rules, the functions of the Board includes:-

- Preparation of inventory of Batteries Manufacturer, Importer, Re-conditioner, Assembler, Dealer, Re-cycler, Re-smelter & Auctioneer.
- Receipt of half-yearly returns of sales/buy back from manufacturer, importer, assembler and re-conditioner.
- Receipt of annual returns of recycling from the recyclers.
- Receipt of half-yearly returns from bulk consumers & auctioneer.
- Preparation and submission of annual compliance status report to CPCB.

The Board wrote to the identified bulk consumers asking them to submit half-yearly returns for bulk consumers in prescribed Form – VIII and for auctioneer of used batteries in prescribed Form – IX. Response from several bulk consumers was received.

(e) *Recycled Plastics Manufacture and Usage Rules, 1999*

Under the Rules, the Board is a prescribed authority for implementation of the Rules relating to manufacture and recycling of Plastics.

The activities of the Board includes:-

- Inventorisation of industrial units manufacturing carry bags and containers made of plastics.
- Grant of registration for manufacturing carry bags or containers made of virgin or recycled plastics.
- Monitoring the industrial units for compliance to the provision of the Rules.

The following units engaged in manufacture of bags or containers made of virgin plastics submitted their application for Registration with the Board as per Rules:

- M/S Megha Polycon Pvt. Ltd.
- Kakarania Innovative Systems Pvt. Ltd.

Both the units were granted Registration under the Rules.

A Show Cause Notice was issued to M/S Meghalaya Polythene Industries (P) Ltd. for failing to apply for Registration in the stipulated time.

2. Functions and Activities under Water (Prevention & Control of Pollution) Cess Act, 1977.

The function of the Board under the Act and Rules made there under is to assess and collect a cess from Local authorities/bodies and Industries consuming water for domestic and industrial purposes.

During the year (2004-05), the amount of cess assessment is Rs. 94, 556.00 (Rupees Ninety four thousand five hundred fifty six) only and cess collection is Rs. 9, 03, 817.00 (Rupees Nine lakhs three thousand eight hundred seventeen) only.

The cess collected is remitted to the consolidated fund of India through Ministry of Environment & Forests, Government of India.



ANNEXURES

ANNEXURE-I

LIST OF BOARD MEMBERS FOR THE PERIOD 2004-2005

1. Chairman
Meghalaya State Pollution Control Board, Shillong. : Chairman
2. Member Secretary,
Meghalaya State Pollution Control Board : Member Convener

OFFICIAL MEMBERS

3. Chief Engineer
Public Health Engineering, Meghalaya, Shillong *or his* : Member
nominee
4. The Director of Industries,
Meghalaya, Shillong *or his* nominee : Member
5. The Director of Health Services (Research, etc),
Meghalaya, Shillong *or his* nominee : Member
6. The Director, Urban affairs,
Meghalaya, Shillong *or his* nominee : Member
7. Chief Conservator of Forests (Social Forestry & : Member
Environment) Meghalaya, Shillong *or his* nominee

MEMBERS FROM LOCAL AUTHORITIES

8. The Chief Executive Member,
Khasi Hills Autonomous District Council *or his* nominee : Member
9. The Chief Executive Member,
Jaintia Hills Autonomous District Council *or his* nominee : Member
10. The Chief Executive Member,
Garo Hills Autonomous District Council *or his* nominee : Member
11. The Chairman,
Shillong Municipal Board *or his* nominee : Member
12. The Chairman,
Tura Municipal Board *or his* nominee : Member

REPRESENTATIVES FROM CORPORATIONS

13. The Managing Director,
Meghalaya Industrial Development Corporation *or his* : Member
nominee

14. The Managing Director,
Mineral Development Corporation, Meghalaya *or* his
nominee : Member

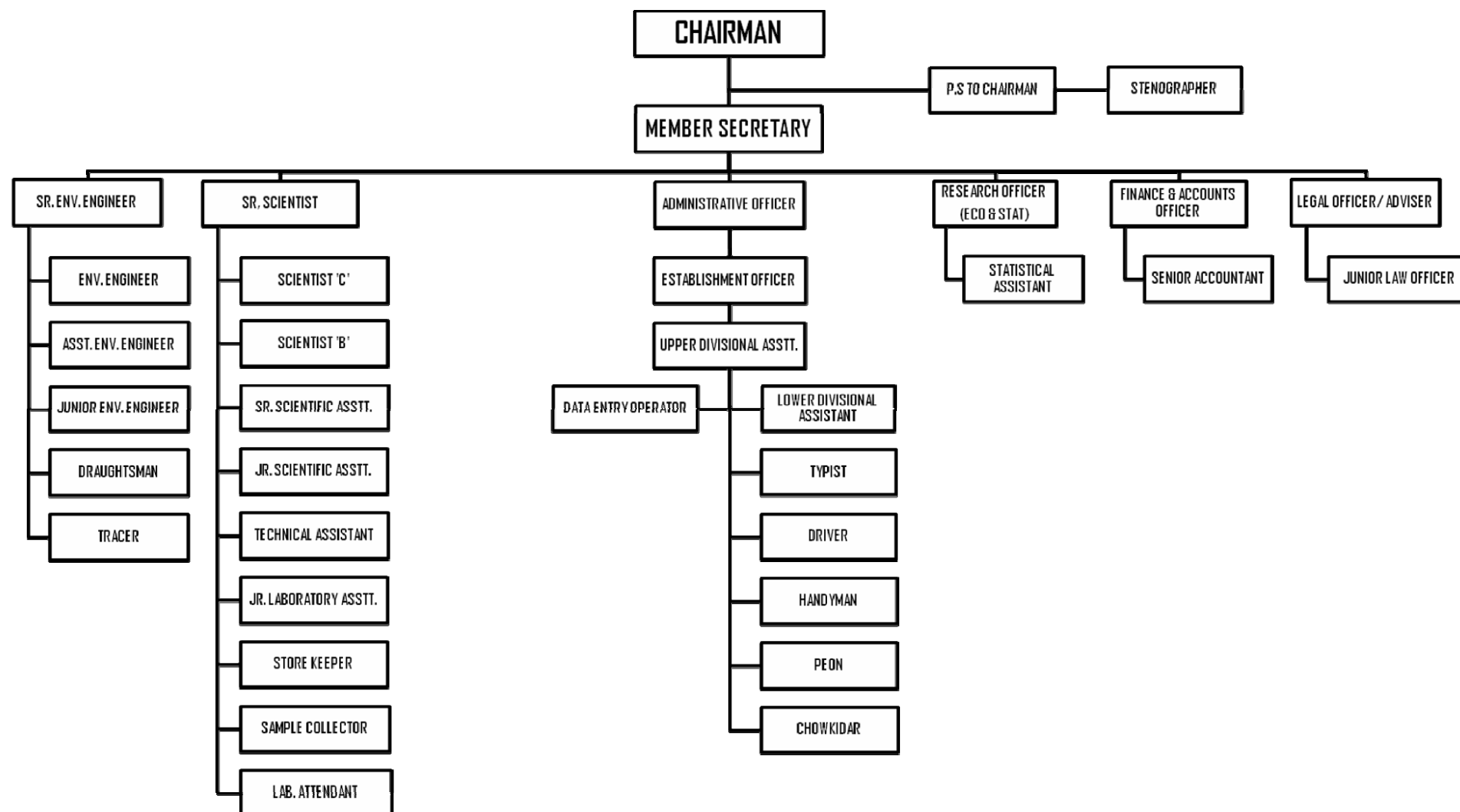
NON-OFFICIAL MEMBERS

15. Shri S.G.Lyngdoh,
Mawlai Nonglum, Shillong : Member
16. Shri N.D. Shullai
Jaiaw Pdeng, Shillong : Member
17. Shri D.S.Laloo,
Moodiap, Nartiang, Jowai. : Member
-



ORGANISATIONAL CHART

ANNEXURE II



ANNUAL REPORT 2004-2005



ANNEXURE-III**STAFF POSITION OF THE MEGHALAYA STATE POLLUTION CONTROL BOARD AS ON 31ST MARCH 2005**

SL. NO.	NAME OF POST	SANCTIONED STRENGTH	WORKING STRENGTH	VACANCY
ADMINISTRATIVE & ACCOUNTS STAFF				
1.	Administrative Officer	1	-	1
2.	Private Secretary to Chairman	1	-	1
3.	Scientist 'B' (Eco. & Stat.)	1	-	1
4.	Legal Officer	1	-	1
5.	Junior Law Officer	1	-	1
6.	Finance & Accounts Officer	1	-	1
7.	Senior Accountant	1	1	-
8.	Establishment Officer	1	1	-
9.	Stenographer Grade II	1	1	-
10.	Statistical Assistant	1	1	-
11.	U.D.A.	4	2	2
12.	L.D.A.	7	2	5
13.	L.D.A cum Typist	5	3	2
14.	Typist	4	1	3
15.	Library Assistant	1	-	1
16.	Driver	6	5	1
17.	Handyman	1	-	1
18.	Peon / Mali / Plumber	15	8	7
19.	Chowkidar	3	2	1
TECHNICAL STAFF				
1.	Sr. Environmental Engineer	1	-	1
2.	Environmental Engineer	2	2	-
3.	Asstt. Environmental Engg.	5	3	2
4.	Junior Environmental Engineer	1	1	-
5.	Senior Draftsman	1	-	1
6.	Tracer	2	-	2
7.	Data Entry Operator	1	-	1
SCIENTIFIC STAFF				
1.	Sr. Scientist	1	-	1
2.	Scientist "C"	1	1	-
3.	Scientist "B"	3	2	1
4.	Scientific Assistant (Senior)	1	1	-
5.	Junior Scientific Asstt.	7	2	5
6.	Technical Assistant	2	1	1
7.	Junior Laboratory Asstt.	4	2	2
8.	Storekeeper	1	1	-
9.	Sample Collector	5	5	-
10.	Field Attendant/Laboratory Attendant	3	2	1
TOTAL		97	50	47

ANNEXURE-IV

PUBLICATIONS		
SL NO	NAME OF STUDY/PROJECTS	YEAR OF PUBLICATION
1.	Bio-Mapping of some important perennial rivers of Meghalaya	2004-2005
2.	Study of Water Quality of Umkhrah River	2004-2005

ANNEXURE-V (A)**LIST OF INDUSTRIES WHICH APPLIED FOR CONSENT TO ESTABLISH DURING 2004-2005**

1. Stone Crushing Industry
2. Stone Crusher (Mison P.Marak)
3. Stone Crusher Unit (Akshay Kr. Hajong)
4. Stone Crusher Unit (Ramthing Sangma)
5. Stone Crusher Machine (Wanroyica Pohlong)
6. Assam Auto Agencies
7. Good Luck Coal Export
8. S.P.Industries
9. Shree Sai Prakash Alloys Pvt. Ltd.
10. Pyrbot Motor Workshop
11. Nongrum Motor Workshop
12. Byrnihat Springs Ltd.
13. P.Kharkongor Stone Crusher
14. Parbati Petro Products Pvt. Ltd
15. North Eastern Health Care & Hospitality Pvt. Ltd.
16. Meghalaya Fusions Ltd. (Ferro Unit)
17. Marak Stone Crushing
18. Purbanchal Alloys Ltd.
19. PMS Grinding Industry
20. S.B.Crusher
21. Catherine Mynsong Motor Works
22. Dynaroof Pvt. Ltd.
23. K.Singh Wann & Sons
24. Oxford Packaging Pvt Ltd.
25. Reming M.Sangma Brick Industry
26. P.K.Kongor Stone Crusher
27. Eastern Saw Mill
28. Abhi Coke Pvt. Ltd.
29. Apollo Tyres
30. Blah Products
31. Blah Enterprise
32. Servicing Centre
33. Premier Feed Mill
34. Premier Roller Flour Mill
35. Premier Hatchery
36. Premier Bakery
37. Vikash Saw-cum-Veneer Mill
38. Marak Stone Crusher

39. Ranikor Lime Industry
40. Hircon Associates Pvt. Ltd.
41. Milestone Beverages Pvt. Ltd.
42. Mohammad Ibrahim Scooter Repairing Works
43. Mahabir Foods Ltd.
44. R.Kharumnuid Stone Crusher
45. R.Kharpran Stone Crusher
46. M.Kharpran Stone Crusher
47. Shyam Century Ferrous Ltd.
48. Boktozama Stone Crusher
49. Megha Technical & Engineers Pvt. Ltd. (DG-Set)
50. A.D.Aggregate Crushers
51. Meghalaya Mineral Products (Re-Rolling Mill)
52. Uranium Corporation of India Ltd. (UCIL)
53. Martina Tariang Stone Crusher
54. Khasi Alloys Pvt. Ltd.
55. NEZONE Fragrances Pvt. Ltd.
56. Riangdo Veneers Pvt. Ltd.
57. Byrnihat Mini Flour Mill
58. Kynsai Basalt Crusher
59. Meghalaya Bitchem Pvt. Ltd.
60. S.Kharkongor Stone Crusher.
61. Kharsati Stone Crusher
62. A.R.Cashewnut Industry
63. Meghalaya Cements Ltd. (Crusher)
64. Lime Kiln (Goolman D.Sawian)
65. N.R.Foods
66. N.R.Chemicals

ANNEXURE-V (B)**LIST OF UNITS WHERE CONSENT TO ESTABLISH ISSUED DURING 2004-2005**

1. Salonsar Business Pvt. Ltd.
2. Syiemlieh Enterprise
3. Ri-Bhoi Bottling
4. Auto Workshop
5. Stone Crusher Unit (Ramthing Sangma)
6. Meghalaya Salt
7. Mohammad Ibrahim Scooter Repairing Works
8. M.D.H Beverages
9. Commercial Iron & Steel (P) Ltd.
10. Mahabir Foods Ltd.
11. Premier Hatchery
12. Catherine Mynsong Motor Works
13. Purbanchal Alloys Ltd.
14. B.S.Bamboo Processing Unit
15. Shillong Veneer & Saw Mill Pvt. Ltd.
16. Stone Crushing Industry
17. Byrnihat Ispat Pvt. Ltd.
18. L.Madanlal Aluminium Ltd.
19. Riangdo Veneers (P) Ltd.
20. Pawan Casting (Meghalaya) (P) Ltd
21. Byrnihat Ispat Pvt. Ltd.
22. Premier Bakery
23. North Eastern Health Care & Hospitality Pvt. Ltd.
24. Stone Crusher Machine (Wanroyica Pohlong)
25. Manjeng Sangma Stone Crusher Unit
26. Mawmluh Cherra Cements Ltd.(MCCL)
27. D.Khongwir Lime Industry
28. Bijoy Industries (Cashew Nut)
29. Phillip Tyres
30. Manjeng Sangma Stone Crusher Unit
31. Gee-See-Kaa Stone Crusher
32. Good Luck Coal Export
33. NEIGRIHMS (DG-Set)
34. Byrnihat Wood Industries Pvt.Ltd.
35. Meghalaya Cements
36. Sumati Stone Crushing Unit
37. NEIGRIHMS (STP)
38. Pyrbot Motor Workshop
39. Sirish Sangma Stone Crushing Industry

40. Ri-Bhoi Fertilizers & Chemicals Pvt. Ltd.
41. Nongrum Motor Workshop
42. P.Kharkongor Stone Crusher
43. Stone Crusher Unit (Ramthing Sangma)
44. Blah Black Stone Products
45. S.K.Abdullah Stone Crusher
46. I.Lakhmi Stone Crusher
47. D.Lakhmi Stone Crusher
48. Silda Milk Processing Unit
49. Sangma Stone Crusher
50. Sawkmie Automobile & Steel Fabrication Works
51. Rynjah Bakery (Closed)
52. Byrnihat Steel (P) Ltd.
53. Mawmluh Cherra Cements Ltd.(MCCL)
54. MECOBRIO, Umbir (Closed)
55. Rynjah Bakery (Closed)
56. J.Automobile Works (Closed)
57. Lyngdoh Polythene Plastic Industries
58. Meghalaya Lime & Mineral Industry
59. Meghalaya Industrial Development Corporation (Closed)
60. Auto Diesel Works (Closed)
61. Ryngksai Welding Workshop
62. Woodland Nursing Home
63. Anderson Meat Product (Closed)
64. Bomber Cement Plant
65. Bethesda Hospital (P) Ltd.
66. Meghalaya Fusions Ltd. [Ready To Eat (RTE) Unit]
67. (MeSEB) - Lakroh Mini Hydel Project
68. MeSEB) Sonapani Mini Hydel Project
69. Caspiancy Synrem Lime Kiln
70. 821 - R.K.Enterprise (Pommad)
71. 820 - M.M.Enterprise (Rngain)
72. 10(2004) - D.Lakhmi Stone Crusher
73. 19(2004) - Ri-Bhoi Fertilizers & Chemicals Pvt. Ltd.
74. 20(2004) -Starlin Rynjah Stone Crushing Unit
75. Gee-See-Kaa Stone Crusher
76. Marbaniang Lime Kiln Unit
77. Sirish Sangma Stone Crushing Industry
78. S.P.Industries
79. 48(2004) - Good Luck Ferro Alloys Pvt. Ltd.
80. 63(2004) - Catherine Mynsong Motor Works
81. Servicing Centre
82. PMS Grinding Industry
83. Fancon's Automobile Repairing Centre

ANNEXURE – V (C)**LIST OF UNITS WHERE CONSENT TO OPERATE ISSUED DURING 2004-2005**

1. Ali Asgar Stone Crusher Machine, Good Luck Coal Exports - (I)
2. Dees Chemicals Pvt. Ltd.
3. Meghalaya Sova Ispat Alloys Ltd.
4. Meghalaya Ispat Sheet Ltd.
5. Meghalaya Lime & Mineral Industry
6. Wood's Garage
7. Ali Asgar Stone Crusher Machine, Good Luck Coal Exports - (II)
8. Nalari Ferro Alloys (P) Ltd.
9. NEZONE Industries Ltd.
10. Shree Radha Creations Pvt. Ltd.
11. Wessly Doloi Stone Crusher
12. Syiem Auto Workshop
13. Mansan Fruit Products
14. Neelu Stone Crusher
15. Nonghuloo Stone Crushing Unit
16. P. Myllem Automobile Workshop
17. Frostar Lartang Lime Kiln
18. Bimla Ispat & Alloys (P) Ltd.
19. Cements Manufacturing Co. Ltd.
20. N.L. Cold Storage Pvt. Ltd.
21. Megha Bread (Bakery)
22. Umadutt Industries (Amjok)
23. Gita Ferro Alloys Pvt. Ltd.
24. Trishul Hi-Tech Industries
25. Ambika Oil, North East Pvt. Ltd.
26. Basanty Kharbhih Stone Crusher
27. Byrong Limestone & Dolomite Mines
28. Blah Enterprise
29. Anirudha Steel (P) Ltd.
30. Jaintia Ferro Alloys Pvt. Ltd.
31. Gregory Kharsati Lime Kiln
32. Nezone Steels (Meghalaya) Ltd.
33. Meghalaya Electronics Development Corporation (MEDC)
34. Dynaroor Pvt. Ltd.

ANNEXURE –V (D)**LIST OF UNITS WHICH HAVE RECEIVED RENEWAL OF CONSENT TO ESTABLISH DURING 2004- 2005**

1. Meghalaya Cements
2. Monolith Cements Pvt. Ltd.
3. Byrnihat Steel (P) Ltd.
4. Haisibon Kharkongor Stone Crusher
5. Kelson War & Sons Lime Kiln Unit
6. Shankur Sing Dkhar Lime Kiln
7. Phillip Tyres
8. Pillar Nongkhlaw Lime Factory
9. Byrong Limestone & Dolomite Mines
10. Flagon Distillers & Bottlers Pvt. Ltd.
11. Fancon's Automobile Repairing Centre
12. Stone Crusher (Pongtung)
13. Northeast Bottling Plant
14. Sasanta Sweet Lime Kiln
15. D.Rymbai Lime Products
16. J.S.Bakery & Confectionery
17. M.M.Enterprise (Rngain)
18. R.K.Enterprise (Pommad)
19. D.Kshiar Stone Crusher
20. I.R.S. Brick Industry
21. Dynasty Motors Pvt. Ltd
22. Shree Sai Smelters (India) (P) Ltd.
23. R.K Motors
24. Meghalaya Minerals & Mines (P) Ltd.
25. T.S.Shrieh Lime
26. Ali Asgar Stone Crusher Machine, Good Luck Coal Exports - (I)
27. Kmel Nongbri Stone Crusher
28. B.S.Marbaninag Stone Crusher Unit
29. Hanny Fibre Pvt. Ltd.
30. P.Mylliem Automobile Workshop
31. Meghalaya Salt
32. Shankur Sing Dkhar Lime Kiln
33. Harmel A.Sangma Stone Crusher Machine
34. Umiam Calcinates (consent)
35. Cements Manufacturing Co. Ltd.
36. Shree Sai Prakash Alloys Pvt. Ltd. (Integrated Steel Plant)
37. H.K.S.Stone Crusher Plant
38. Moris Lyngdoh Automobile Servicing Unit
39. Shree Sai Smelters (India) (P) Ltd.
40. Bakery & Confectioners

41. T.M.Motor Works
42. T.T.M.Bakery Unit
43. Meghalaya Alloys Pvt. Ltd.
44. Servell Enterprise
45. Riwar Mihngi Stone Crusher Service
46. Nezone Steels (Meghalaya) Ltd.
47. Tariang Body Builder
48. Mini Tea Processing Unit
49. Moderns Offset Printing Press
50. City Motor Works
51. Mehun Dkhar Stone Crusher
52. T.Uriah Stone Crusher
53. Teinam Bakery
54. Lum Mawshun Mining Corporation (Lafarge Umiam Pvt. Ltd.)
55. Flagon Distillers & Bottlers Pvt. Ltd.
56. Optomax Calcium Calcinate Pvt. Ltd.
57. N.L.Cold Storage Pvt. Ltd.
58. Nonghuloo Stone Crushing Unit

ANNEXURE – V (E)**LIST OF UNITS WHICH HAVE RECEIVED RENEWAL OF CONSENT TO OPERATE DURING 2004- 2005**

1. Meghalaya Minerals & Mines (P) Ltd.
2. Adhunik Meghalaya Steel (P) Ltd.
3. York Print Pvt. Ltd.
4. Dees Chemicals Pvt. Ltd.
5. Komorrah Limestone Mining Co.Ltd.
6. Timpack (P) Ltd.
7. Shyam Century Ferrous Ltd.,
8. RNB Minerals & Chemicals-Ferric & Non- Ferric Alum,
9. Greystone Ispat (P) Ltd.
10. Mansan Fruit Products
11. Pioneer Carbide (P) Ltd.
12. Meghalaya Bamboo Chips Ltd.
13. Meghalaya Ispat Sheet Ltd.
14. Shiromani Food Products Pvt. Ltd.
15. Meghalaya Steel (P) Ltd.,
16. R.N.B Minerals & Chemicals (P) Ltd.(Hydrated Lime),
17. Wessly Doloi Stone Crusher
18. Megha Polycon (P) Ltd.
19. J.L.Basaiaiwmoit/Joe Motor Automobiles
20. Eastern Panorama Offset Press
21. Kakarania Innovative Systems (P) Ltd.
22. Goenka Engineering Works
23. Wessly Doloi Stone Crusher
24. Meghalaya Steel (P) Ltd., Steel Rolling Mill
25. Shree Shankar Atta Chakki Mill
26. Gee-See-Kaa Stone Crushing Unit
27. Eastern Petro Chemicals - LPG
28. S.Suting, Nongthymmai, Mawsmmai
29. Tony Passah Mechanical Engineering Work
30. Meghalaya Carbide & Chemical Products
31. Meghalaya Electronics Development Corporation (MEDC)
32. Modrina Auto Enterprise
33. Shree Sai Smelters (India) Pvt. Ltd.
34. Albarin Suting Stone Crusher
35. Toto Industries
36. Meghalaya Alloys Pvt. Ltd.
37. Gregory Kharsati Lime Kiln
38. Timpack (P) Ltd.
39. Nalari Ferro Alloys (P) Ltd.
40. NEZONE Industries Ltd.
41. S.M Polypack Industries

42. H.M.Cements Ltd.
43. H.K.S.Stone Crusher Plant
44. Shivani Ispat & Rolling Mills (P) Ltd.
45. RKB Mini Cement Plant
46. Forbes Aquamall Ltd.
47. Goenka Engineering Works
48. Meghalaya Bamboo Chips Ltd.
49. H.K.S.Stone Crusher Plant
50. Shivam Ispat & Alloys (P) Ltd.
51. Brahmaputra Wire Products
52. Marak Plastics
53. Pioneer Carbide (P) Ltd.
54. Ganpati Rolling Mills (P) Ltd.,
55. R.N.B Carbides & Ferro Alloys
56. Byrnihat Oxygen Pvt. Ltd.
57. Pawan Ispat (P) Ltd.
58. York Print Pvt. Ltd.
59. K.K.Beverages Pvt. Ltd.
60. Eastern Panorama Offset Press
61. Thruin Nongspung Saw Mill
62. Fruit Preservation Centre, Shillong.
63. Belle Herbals Pvt. Ltd.
64. 706 - Meghalaya Gases Ltd.
65. Colortek (Meghalaya) Pvt. Ltd.
66. Shree Sai Megha Alloys (P) Ltd.
67. Panchamukhi Processors (Megha) Pvt. Ltd.
68. Shree Sai Rolling Mills (Indis) Pvt. Ltd. (TMT)
69. Brilsilain Kharmawphlang
70. VanshaJ.M.Perfumery & Essential Oil Co. Ltd.
71. K.K.Beverages Pvt. Ltd.
72. Northeast Bottling Plant
73. Shiromani Food Products Pvt. Ltd.

ANNEXURE –VI (A)
LIST OF UNITS WHERE SHOW CAUSE ARE ISSUED AGAINST THEM DURING 2004 – 2005

1. Tyre Rethreading Works
2. Brahm India Pvt. Ltd.
3. Edwel Dkhar Stone Crusher Unit
4. Gregory Kharsati Lime Kiln
5. Deborah Lime Industry
6. Donny Ryan N.Sangma Servicing Workshop
7. N.R.Roller Flour Mills Co.(P) Ltd.,
8. Lapphang Jana Nongbet Body Construction Workshop
9. D.K.Lakiang Bakery
10. Lawbyrwa Limestone Calcination Industry
11. S.Chyne Press
12. Donny Ryan N.Sangma Servicing Workshop
13. Stone Crusher (Mawlyngngad)
14. Jaintia Coal Processor
15. Anirudha Steel (P) Ltd.
16. RKB Mini Cement Plant
17. Motor Repair Workshop
18. A.R.Wahlang Auto Workshop
19. Imperial Granite
20. Control Marbaniang Lime Kiln
21. Dathai Photograph Frame & Laboratory
22. Lyngdoh Lime Products
23. loona Shadap Stone Crusher
24. Parbest Rangslang Stone Crusher
25. Auto Mech
26. Reginald Kharmujai, Sunbridge Dairy Processing Plant
(Closed)
27. Shylla Auto Engineering
28. Diengdoh Lime Kiln
29. Gregory Kharsati Lime Kiln
30. Suting Fruit Processing Unit
31. R.K.Enterprise (Pommad)
32. Multi Mobile Precision
33. B.R.Workshop-cum- Truck Body Building Unit
34. Shree Radha Creation (P) Ltd.
35. Limestone Kiln (Pajwa) Unit
36. Eastern Servicing Garage
37. Megha Stone Crusher

38. Mawphor Offset Printing Press
39. Sohtun Printing Press
40. Miliata June Sakhar Stone Crusher
41. Sierra Motors
42. B.M.Enterprises
43. Stone Crusher (Pongtung)
44. Jaintia Coal Processor
45. P.M.Motor Workshop
46. Donny Ryan N.Sangma Servicing Workshop
47. Stone Crusher - Rapki Lamare
48. Stone Crusher (Mawlyngngad)
49. Stanley Kurbah Automobile Workshop
50. Mawmihthied Lime
51. D.Kshiar Stone Crusher
52. Jaintia Cements Ltd.
53. Inheritance Dry Cleaners
54. Studio 223, Jopsimon Phanbuh
55. Jaintia Ferro Alloys Pvt. Ltd. (Ferro Silicon)
56. RKB Mini Cement Plant
57. L.S.P Cold Rethread Tyre Service
58. Trishul Hi-Tech Industries
59. Bimla Ispat & Alloys (P) Ltd.
60. M.Warjri, Ree Cottage Industry
61. Eastern Mining Ltd.

ANNEXURE –VI (B)**LIST OF INDUSTRIES WHICH CLOSURE NOTICE IS ISSUED DURING 2004 – 2005**

1. Stanley Kurbah Automobile Workshop
2. Baison Dkhar Stone Crushing Unit
3. Hotel Rickman
4. Eastern Mining Ltd.
5. S.D.Diengdoh Bio-Coal Plant
6. M.Warjri, Ree Cottage Industry
7. Satya Megha Ispat (P) Ltd.
8. A.R.Wahlang Auto Workshop
9. Blah & Blah
10. B.M.Enterprises
11. Gita Ferro Alloys Pvt. Ltd.
12. Trishul Hi-Tech Industries
13. loona Shadap Stone Crusher
14. Motor Repair Workshop
15. Ichamati Lime Industry
16. Sohtun Printing Press
17. Multi Mobile Precision
18. Pollution from State Bank
19. F.S.Enterprise (Closed)
20. RKB Mini Cement Plant
21. Byrnihat Ispat Pvt. Ltd.
22. D.K.Lakiang Bakery
23. Lamphrang M.Umlong Bakery
24. Baison Dkhar Stone Crushing Unit
25. Mawmihthied Lime
26. Lawbyrwa Limestone Calcination Industry
27. Hotel Rickman
28. Moonlight Lime Products
29. Elvis Sohklet Enterprise Lime Kiln
30. Suting Fruit Processing Unit
31. Megha Bread (Bakery)
32. Anirudha Steel (P) Ltd.
33. Blah & Blah
34. Lyngdoh Lime Products
35. Pandit Chyne Lime Works (Closed)
36. ARLL Diary Products (Closed)

37. Gita Ferro Alloys Pvt. Ltd.
38. Trishul Hi-Tech Industries
39. Jaintia Cements Ltd.
40. Anirudha Steel (P) Ltd.
41. Miliata June Sakhar Stone Crusher
42. AMS Cement Pvt. Ltd.
43. Megha Stone Crusher
44. Douglas Rymbai Stone Crusher
45. Malngiang Lime Industry
46. Satya Megha Ispat (P) Ltd.
47. Wankhar Lime Manufacturer
48. W.Mawa Lime Kiln (Closed)
49. Santlet Enterprise
50. W.R.Kariang Marbaniang Lime Kiln
51. Lum Mawshun Mining Corporation (Lafarge Umiam Pvt. Ltd.)
52. Laitkynsew Lime & Chemicals
53. S.Suting, Nongthymmai, Mawsmi
54. Jorabat Briquette
55. Hills Motor Works
56. S.D.Diengdoh Bio-Coal Plant
57. Marsyiem Lime Works
58. Eastern Stone
59. Bimla Ispat & Alloys (P) Ltd.
60. Studio 223, Jopsimon Phanbuh
61. B.Rymbai Lime Industry
62. Wankhar Lime Manufacturer
63. Malngiang Lime Industry
64. Santlet Enterprise
65. Baison Dkhar Stone Crushing Unit
66. D.Rymbai Lime Products
67. Lamphrang M.Umlong Bakery
68. Ri-Lum Motor Works
69. RKB Mini Cement Plant
70. Ichamati Lime Industry



ANNEXURE-VII

TRAININGS BETWEEN 1 st APRIL 2004 UPTO 31 st MARCH 2005						
SL. NO	NAME & DESIGNATION	NAME OF TRAINING	PLACE OF TRAINING	PERIOD OF TRAINING	LETTER NO	REMARKS
1.	Shri W.R. Kharkrang, AEE	Environmental statements including waste minisation, environmental auditing & management system for Cement Industries.	Central Building Research Institute	March 16-18, 2005	MPCB/TSC I (Pt-XVIII)/2004-2005/49 dtd. 21/02/2005	Cancelled vide Letter No. MPCB/TSC I (Pt-XVIII)/2004-2005/56 dtd. 10/03/2005
2.	Smti J. Sawian, Sc 'B' & Smti M.N. Diengdoh, J.S.A	Water Management Training	PHE Conference Hall, Shillong	March 28-29, 2005	MPCB/TSC I (Pt-XVIII)/2004-2005/62 dtd. 24/03/2005	Attended
3.	Shri W.R. Kharkrang, A.E.E	Principle of Environmental Compliance & Enforcement	Kolkata	May 5-7, 2004	MPCB/TSC I (Pt-XVII)/2004-2005/66	Attended
4.	Shri W.R. Kharkrang, A.E.E	Environmental Management Capacity Building Technical Assistant Project	University of NSW, Sydney, Australia	June 14-25, 2004	MPCB/TSC I (Pt-XVII)/2004-2005/75 & 82	Attended

MEGHALAYA STATE POLL

Published by:

♦ **The Member Secretary**
Meghalaya State Pollution Control Board
Shillong

Coordination & Supervision

♦ **Shri A. Biswa, Chairman**
Meghalaya State Pollution Control Board
Shillong

Compilation & Text Editing

♦ **Shri W.L. Syiemlieh, L.D.A**
Meghalaya State Pollution Control Board
Shillong

Meghalaya State Pollution Control Board
'Arden', Lumpyngngad, Shillong – 793014
E-mail: www.megspcb.gov.in